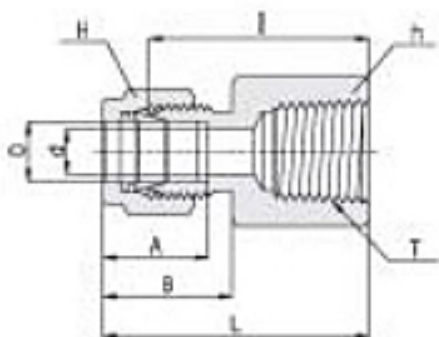


Produits > Instrumentation > Raccords double bague > Doubles bagues Hy-Lok > Union femelle

Union simple femelle



Référence	Tube O.D. (D)	A	B	L	I	Material	Min. d	T (NPT)	T [R (PT)]	Type
CFC 1-1N-S316	1/16 in 1.58 mm	8.63 mm	10.92 mm	23.62 mm	19.81 mm	316 Stainless Steel	1.27 mm	1/16 in	N/A	Connects Fractional Tube to Male NPT Thread
CFC 1-2N-S316	1/16 in 1.58 mm	8.63 mm	10.92 mm	24.38 mm	20.57 mm	316 Stainless Steel	1.27 mm	1/8 in	N/A	Connects Fractional Tube to Male NPT Thread
CFC 2-2N-S316	1/8 in 3.17 mm	12.70 mm	15.24 mm	28.70 mm	22.09 mm	316 Stainless Steel	2.28 mm	1/8 in	N/A	Connects Fractional Tube to Male NPT Thread
CFC 2-4N-S316	1/8 in 3.17 mm	12.70 mm	15.24 mm	33.52 mm	26.92 mm	316 Stainless Steel	2.28 mm	1/4 in	N/A	Connects Fractional Tube to Male NPT Thread
CFC 3-2N-S316	3/16 in 4.76 mm	13.71 mm	16.00 mm	29.71 mm	23.11 mm	316 Stainless Steel	3.04 mm	1/8 in	N/A	Connects Fractional Tube to Male NPT Thread
CFC 4-2N-S316	1/4 in 6.35 mm	15.24 mm	17.78 mm	31.24 mm	23.87 mm	316 Stainless Steel	4.82 mm	1/8 in	N/A	Connects Fractional Tube to Male NPT Thread
CFC 4-4N-S316	1/4 in 6.35 mm	15.24 mm	17.78 mm	35.81 mm	28.44 mm	316 Stainless Steel	4.82 mm	1/4 in	N/A	Connects Fractional Tube to Male NPT Thread

Référence	Tube O.D. (D)	A	B	L	I	Material	Min. d	T (NPT)	T [R (PT)]	Type
CFC 4-6N-S316	1/4 in 6.35 mm	15.24 mm	17.78 mm	37.59 mm	30.22 mm	316 Stainless Steel	4.82 mm	3/8 in	N/A	Connects Fractional Tube to Male NPT Thread
CFC 4-8N-S316	1/4 in 6.35 mm	15.24 mm	17.78 mm	42.41 mm	35.05 mm	316 Stainless Steel	4.82 mm	1/2 in	N/A	Connects Fractional Tube to Male NPT Thread
CFC 5-2N-S316	5/16 in 7.93 mm	16.25 mm	18.54 mm	32.0 mm	24.63 mm	316 Stainless Steel	6.35 mm	1/8 in	N/A	Connects Fractional Tube to Male NPT Thread
CFC 5-4N-S316	5/16 in 7.93 mm	16.25 mm	18.54 mm	36.83 mm	29.46 mm	316 Stainless Steel	6.35 mm	1/4 in	N/A	Connects Fractional Tube to Male NPT Thread
CFC 6-2N-S316	3/8 in 9.52 mm	16.76 mm	19.30 mm	32.76 mm	25.4 mm	316 Stainless Steel	7.11 mm	1/8 in	N/A	Connects Fractional Tube to Male NPT Thread
CFC 6-4N-S316	3/8 in 9.52 mm	16.76 mm	19.30 mm	37.59 mm	30.22 mm	316 Stainless Steel	7.11 mm	1/4 in	N/A	Connects Fractional Tube to Male NPT Thread
CFC 6-6N-S316	3/8 in 9.52 mm	16.76 mm	19.30 mm	39.11 mm	31.75 mm	316 Stainless Steel	7.11 mm	3/8 in	N/A	Connects Fractional Tube to Male NPT Thread
CFC 6-8N-S316	3/8 in 9.52 mm	16.76 mm	19.30 mm	43.94 mm	36.57 mm	316 Stainless Steel	7.11 mm	1/2 in	N/A	Connects Fractional Tube to Male NPT Thread
CFC 6-12N-S316	3/8 in 9.52 mm	16.76 mm	19.30 mm	47.75 mm	40.38 mm	316 Stainless Steel	7.11 mm	3/4 in	N/A	Connects Fractional Tube to Male NPT Thread
CFC 8-4N-S316	1/2 in 12.7 mm	22.86 mm	21.84 mm	40.38 mm	30.22 mm	316 Stainless Steel	10.41 mm	1/4 in	N/A	Connects Fractional Tube to Male NPT Thread
CFC 8-6N-S316	1/2 in 12.7 mm	22.86 mm	21.84 mm	41.91 mm	31.75 mm	316 Stainless Steel	10.41 mm	3/8 in	N/A	Connects Fractional Tube to Male NPT Thread
CFC 8-8N-S316	1/2 in 12.7 mm	22.86 mm	21.84 mm	46.73 mm	36.57 mm	316 Stainless Steel	10.41 mm	1/2 in	N/A	Connects Fractional Tube to Male NPT Thread
CFC 8-12N-S316	1/2 in 12.7 mm	22.86 mm	21.84 mm	48.26 mm	38.10 mm	316 Stainless Steel	10.41 mm	3/4 in	N/A	Connects Fractional Tube to Male NPT Thread
CFC 10-6N-S316	5/8 in 15.87 mm	24.38 mm	21.84 mm	41.91 mm	31.75 mm	316 Stainless Steel	12.7 mm	3/8 in	N/A	Connects Fractional Tube to Male NPT Thread
CFC 10-8N-S316	5/8 in 15.87 mm	24.38 mm	21.84 mm	46.73 mm	36.57 mm	316 Stainless Steel	12.7 mm	1/2 in	N/A	Connects Fractional Tube to Male NPT Thread
CFC 10-12N-S316	5/8 in 15.87 mm	24.38 mm	21.84 mm	48.26 mm	38.10 mm	316 Stainless Steel	12.7 mm	3/4 in	N/A	Connects Fractional Tube to Male NPT Thread
CFC 12-8N-S316	3/4 in 19.05 mm	24.38 mm	21.84 mm	46.73 mm	36.57 mm	316 Stainless Steel	15.74 mm	1/2 in	N/A	Connects Fractional Tube to Male NPT Thread

Référence	Tube O.D. (D)	A	B	L	I	Material	Min. d	T (NPT)	T [R (PT)]	Type
CFC 12-12N-S316	3/4 in 19.05 mm	24.38 mm	21.84 mm	48.26 mm	38.10 mm	316 Stainless Steel	15.74 mm	3/4 in	N/A	Connects Fractional Tube to Male NPT Thread
CFC 14-12N-S316	7/8 in 22.22 mm	25.90 mm	21.84 mm	49.78 mm	39.62 mm	316 Stainless Steel	18.28 mm	3/4 in	N/A	Connects Fractional Tube to Male NPT Thread
CFC 16-12N-S316	1 in 25.4 mm	31.24 mm	26.41 mm	53.34 mm	41.14 mm	316 Stainless Steel	22.35 mm	3/4 in	N/A	Connects Fractional Tube to Male NPT Thread
CFC 16-16N-S316	1 in 25.4 mm	31.24 mm	26.41 mm	62.23 mm	50.03 mm	316 Stainless Steel	22.35 mm	1 in	N/A	Connects Fractional Tube to Male NPT Thread
CFC 20-20N-S316	1 1/4 in 31.75 mm	41.14 mm	38.86 mm	74.67 mm	52.57 mm	316 Stainless Steel	27.68 mm	1 1/4 in	N/A	Connects Fractional Tube to Male NPT Thread
CFC 24-24N-S316	1 1/2 in 38.10 mm	50.03 mm	45.21 mm	83.31 mm	56.13 mm	316 Stainless Steel	34.03 mm	1 1/2 in	N/A	Connects Fractional Tube to Male NPT Thread
CFC 32-32N-S316	2 in 50.80 mm	67.56 mm	62.73 mm	101.60 mm	64.26 mm	316 Stainless Steel	45.97 mm	2 in	N/A	Connects Fractional Tube to Male NPT Thread
CFC 3M-2R-S316	3 mm	12.9 mm	15.3 mm	28.70 mm	22.1 mm	316 Stainless Steel	2.4 mm	N/A	1/8 in	Connects Metric Tube to Male ISO Tapered Thread
CFC 3M-4R-S316	3 mm	12.9 mm	15.3 mm	33.50 mm	26.9 mm	316 Stainless Steel	2.4 mm	N/A	1/4 in	Connects Metric Tube to Male ISO Tapered Thread
CFC 4M-2R-S316	4 mm	13.7 mm	16.1 mm	29.7 mm	23.1 mm	316 Stainless Steel	2.4 mm	N/A	1/8 in	Connects Metric Tube to Male ISO Tapered Thread
CFC 6M-2R-S316	6.0 mm	15.3 mm	17.7 mm	31.3 mm	23.9 mm	316 Stainless Steel	4.8 mm	N/A	1/8 in	Connects Metric Tube to Male ISO Tapered Thread
CFC 6M-4R-S316	6.0 mm	15.3 mm	17.7 mm	35.8 mm	28.4 mm	316 Stainless Steel	4.8 mm	N/A	1/4 in	Connects Metric Tube to Male ISO Tapered Thread
CFC 6M-6R-S316	6.0 mm	15.3 mm	17.7 mm	36.9 mm	29.5 mm	316 Stainless Steel	4.8 mm	N/A	3/8 in	Connects Metric Tube to Male ISO Tapered Thread
CFC 6M-8R-S316	6.0 mm	15.3 mm	17.7 mm	42.5 mm	35.1 mm	316 Stainless Steel	4.8 mm	N/A	1/2 in	Connects Metric Tube to Male ISO Tapered Thread
CFC 8M-2R-S316	8.0 mm	16.2 mm	18.6 mm	32.1 mm	24.6 mm	316 Stainless Steel	6.4 mm	N/A	1/8 in	Connects Metric Tube to Male ISO Tapered Thread
CFC 8M-4R-S316	8.0 mm	16.2 mm	18.6 mm	37.0 mm	29.5 mm	316 Stainless Steel	6.4 mm	N/A	1/4 in	Connects Metric Tube to Male ISO Tapered Thread
CFC 8M-6R-S316	8.0 mm	16.2 mm	18.6 mm	37.7 mm	30.2 mm	316 Stainless Steel	6.4 mm	N/A	3/8 in	Connects Metric Tube to Male ISO Tapered Thread
CFC 8M-8R-S316	8.0 mm	16.2 mm	18.6 mm	43.3 mm	35.8 mm	316 Stainless Steel	6.4 mm	N/A	1/2 in	Connects Metric Tube to Male ISO Tapered Thread
CFC 10M-2R-S316	10.0 mm	17.2 mm	19.5 mm	33.0 mm	25.4 mm	316 Stainless Steel	7.9 mm	N/A	1/8 in	Connects Metric Tube to Male ISO Tapered Thread
CFC 10M-4R-S316	10.0 mm	17.2 mm	19.5 mm	37.80 mm	30.2 mm	316 Stainless Steel	7.9 mm	N/A	1/4 in	Connects Metric Tube to Male ISO Tapered Thread
CFC 10M-6R-S316	10.0 mm	17.2 mm	19.5 mm	38.60 mm	31.0 mm	316 Stainless Steel	7.9 mm	N/A	3/8 in	Connects Metric Tube to Male ISO Tapered Thread
CFC 10M-8R-S316	10.0 mm	17.2 mm	19.5 mm	44.2 mm	36.6 mm	316 Stainless Steel	7.9 mm	N/A	1/2 in	Connects Metric Tube to Male ISO Tapered Thread
CFC 12M-2R-S316	12.0 mm	22.8 mm	22.0 mm	38.5 mm	28.4 mm	316 Stainless Steel	9.5 mm	N/A	1/8 in	Connects Metric Tube to Male ISO Tapered Thread
CFC 12M-4R-S316	12.0 mm	22.8 mm	22.0 mm	40.3 mm	30.2 mm	316 Stainless Steel	9.5 mm	N/A	1/4 in	Connects Metric Tube to Male ISO Tapered Thread

Référence	Tube O.D. (D)	A	B	L	I	Material	Min. d	T (NPT)	T [R (PT)]	Type
CFC 12M-6R-S316	12.0 mm	22.8 mm	22.0 mm	41.1 mm	31.0 mm	316 Stainless Steel	9.5 mm	N/A	3/8 in	Connects Metric Tube to Male ISO Tapered Thread
CFC 12M-8R-S316	12.0 mm	22.8 mm	22.0 mm	46.7 mm	36.6 mm	316 Stainless Steel	9.5 mm	N/A	1/2 in	Connects Metric Tube to Male ISO Tapered Thread
CFC 12M-12R-S316	12.0 mm	22.8 mm	22.0 mm	49.0 mm	38.9 mm	316 Stainless Steel	9.5 mm	N/A	3/4 in	Connects Metric Tube to Male ISO Tapered Thread
CFC 15M-8R-S316	15 mm	24.4 mm	22.0 mm	46.7 mm	36.6 mm	316 Stainless Steel	11.9 mm	N/A	1/2 in	Connects Metric Tube to Male ISO Tapered Thread
CFC 16M-8R-S316	16.0 mm	24.4 mm	22.0 mm	46.90 mm	36.8 mm	316 Stainless Steel	12.7 mm	N/A	1/2 in	Connects Metric Tube to Male ISO Tapered Thread
CFC 20M-8R-S316	20 mm	26.0 mm	22.0 mm	47.9 mm	37.8 mm	316 Stainless Steel	15.9 mm	N/A	1/2 in	Connects Metric Tube to Male ISO Tapered Thread
CFC 20M-12R-S316	20 mm	26.0 mm	22.0 mm	49.7 mm	39.6 mm	316 Stainless Steel	15.9 mm	N/A	3/4 in	Connects Metric Tube to Male ISO Tapered Thread
CFC 22M-12R-S316	22 mm	26.0 mm	22.0 mm	49.7 mm	39.6 mm	316 Stainless Steel	18.3 mm	N/A	3/4 in	Connects Metric Tube to Male ISO Tapered Thread
CFC 22M-16R-S316	22 mm	26.0 mm	22.0 mm	57.9 mm	47.8 mm	316 Stainless Steel	18.3 mm	N/A	1 in	Connects Metric Tube to Male ISO Tapered Thread
CFC 25M-12R-S316	25 mm	31.3 mm	26.5 mm	53.40 mm	41.1 mm	316 Stainless Steel	21.8 mm	N/A	3/4 in	Connects Metric Tube to Male ISO Tapered Thread
CFC 25M-16R-S316	25 mm	31.3 mm	26.5 mm	62.3 mm	50.0 mm	316 Stainless Steel	21.8 mm	N/A	1 in	Connects Metric Tube to Male ISO Tapered Thread
CFC 1-1N-STEL	1/16 in 1.58 mm	8.63 mm	10.92 mm	23.62 mm	19.81 mm	Carbon Steel	1.27 mm	1/16 in	N/A	Connects Fractional Tube to Male NPT Thread
CFC 1-2N-STEL	1/16 in 1.58 mm	8.63 mm	10.92 mm	24.38 mm	20.57 mm	Carbon Steel	1.27 mm	1/8 in	N/A	Connects Fractional Tube to Male NPT Thread
CFC 2-2N-STEL	1/8 in 3.17 mm	12.70 mm	15.24 mm	28.70 mm	22.09 mm	Carbon Steel	2.28 mm	1/8 in	N/A	Connects Fractional Tube to Male NPT Thread
CFC 2-4N-STEL	1/8 in 3.17 mm	12.70 mm	15.24 mm	33.52 mm	26.92 mm	Carbon Steel	2.28 mm	1/4 in	N/A	Connects Fractional Tube to Male NPT Thread
CFC 3-2N-STEL	3/16 in 4.76 mm	13.71 mm	16.00 mm	29.71 mm	23.11 mm	Carbon Steel	3.04 mm	1/8 in	N/A	Connects Fractional Tube to Male NPT Thread
CFC 4-2N-STEL	1/4 in 6.35 mm	15.24 mm	17.78 mm	31.24 mm	23.87 mm	Carbon Steel	4.82 mm	1/8 in	N/A	Connects Fractional Tube to Male NPT Thread
CFC 4-4N-STEL	1/4 in 6.35 mm	15.24 mm	17.78 mm	35.81 mm	28.44 mm	Carbon Steel	4.82 mm	1/4 in	N/A	Connects Fractional Tube to Male NPT Thread
CFC 4-6N-STEL	1/4 in 6.35 mm	15.24 mm	17.78 mm	37.59 mm	30.22 mm	Carbon Steel	4.82 mm	3/8 in	N/A	Connects Fractional Tube to Male NPT Thread
CFC 4-8N-STEL	1/4 in 6.35 mm	15.24 mm	17.78 mm	42.41 mm	35.05 mm	Carbon Steel	4.82 mm	1/2 in	N/A	Connects Fractional Tube to Male NPT Thread
CFC 5-2N-STEL	5/16 in 7.93 mm	16.25 mm	18.54 mm	32.0 mm	24.63 mm	Carbon Steel	6.35 mm	1/8 in	N/A	Connects Fractional Tube to Male NPT Thread

Référence	Tube O.D. (D)	A	B	L	I	Material	Min. d	T (NPT)	T [R (PT)]	Type
CFC 5-4N-STEL	5/16 in 7.93 mm	16.25 mm	18.54 mm	36.83 mm	29.46 mm	Carbon Steel	6.35 mm	1/4 in	N/A	Connects Fractional Tube to Male NPT Thread
CFC 6-2N-STEL	3/8 in 9.52 mm	16.76 mm	19.30 mm	32.76 mm	25.4 mm	Carbon Steel	7.11 mm	1/8 in	N/A	Connects Fractional Tube to Male NPT Thread
CFC 6-4N-STEL	3/8 in 9.52 mm	16.76 mm	19.30 mm	37.59 mm	30.22 mm	Carbon Steel	7.11 mm	1/4 in	N/A	Connects Fractional Tube to Male NPT Thread
CFC 6-6N-STEL	3/8 in 9.52 mm	16.76 mm	19.30 mm	39.11 mm	31.75 mm	Carbon Steel	7.11 mm	3/8 in	N/A	Connects Fractional Tube to Male NPT Thread
CFC 6-8N-STEL	3/8 in 9.52 mm	16.76 mm	19.30 mm	43.94 mm	36.57 mm	Carbon Steel	7.11 mm	1/2 in	N/A	Connects Fractional Tube to Male NPT Thread
CFC 6-12N-STEL	3/8 in 9.52 mm	16.76 mm	19.30 mm	47.75 mm	40.38 mm	Carbon Steel	7.11 mm	3/4 in	N/A	Connects Fractional Tube to Male NPT Thread
CFC 8-4N-STEL	1/2 in 12.7 mm	22.86 mm	21.84 mm	40.38 mm	30.22 mm	Carbon Steel	10.41 mm	1/4 in	N/A	Connects Fractional Tube to Male NPT Thread
CFC 8-6N-STEL	1/2 in 12.7 mm	22.86 mm	21.84 mm	41.91 mm	31.75 mm	Carbon Steel	10.41 mm	3/8 in	N/A	Connects Fractional Tube to Male NPT Thread
CFC 8-8N-STEL	1/2 in 12.7 mm	22.86 mm	21.84 mm	46.73 mm	36.57 mm	Carbon Steel	10.41 mm	1/2 in	N/A	Connects Fractional Tube to Male NPT Thread
CFC 8-12N-STEL	1/2 in 12.7 mm	22.86 mm	21.84 mm	48.26 mm	38.10 mm	Carbon Steel	10.41 mm	3/4 in	N/A	Connects Fractional Tube to Male NPT Thread
CFC 10-6N-STEL	5/8 in 15.87 mm	24.38 mm	21.84 mm	41.91 mm	31.75 mm	Carbon Steel	12.7 mm	3/8 in	N/A	Connects Fractional Tube to Male NPT Thread
CFC 10-8N-STEL	5/8 in 15.87 mm	24.38 mm	21.84 mm	46.73 mm	36.57 mm	Carbon Steel	12.7 mm	1/2 in	N/A	Connects Fractional Tube to Male NPT Thread
CFC 10-12N-STEL	5/8 in 15.87 mm	24.38 mm	21.84 mm	48.26 mm	38.10 mm	Carbon Steel	12.7 mm	3/4 in	N/A	Connects Fractional Tube to Male NPT Thread
CFC 12-8N-STEL	3/4 in 19.05 mm	24.38 mm	21.84 mm	46.73 mm	36.57 mm	Carbon Steel	15.74 mm	1/2 in	N/A	Connects Fractional Tube to Male NPT Thread
CFC 12-12N-STEL	3/4 in 19.05 mm	24.38 mm	21.84 mm	48.26 mm	38.10 mm	Carbon Steel	15.74 mm	3/4 in	N/A	Connects Fractional Tube to Male NPT Thread
CFC 14-12N-STEL	7/8 in 22.22 mm	25.90 mm	21.84 mm	49.78 mm	39.62 mm	Carbon Steel	18.28 mm	3/4 in	N/A	Connects Fractional Tube to Male NPT Thread
CFC 16-12N-STEL	1 in 25.4 mm	31.24 mm	26.41 mm	53.34 mm	41.14 mm	Carbon Steel	22.35 mm	3/4 in	N/A	Connects Fractional Tube to Male NPT Thread

Référence	Tube O.D. (D)	A	B	L	I	Material	Min. d	T (NPT)	T [R (PT)]	Type
CFC 16-16N-STEL	1 in 25.4 mm	31.24 mm	26.41 mm	62.23 mm	50.03 mm	Carbon Steel	22.35 mm	1 in	N/A	Connects Fractional Tube to Male NPT Thread
CFC 20-20N-STEL	1 1/4 in 31.75 mm	41.14 mm	38.86 mm	74.67 mm	52.57 mm	Carbon Steel	27.68 mm	1 1/4 in	N/A	Connects Fractional Tube to Male NPT Thread
CFC 24-24N-STEL	1 1/2 in 38.10 mm	50.03 mm	45.21 mm	83.31 mm	56.13 mm	Carbon Steel	34.03 mm	1 1/2 in	N/A	Connects Fractional Tube to Male NPT Thread
CFC 32-32N-STEL	2 in 50.80 mm	67.56 mm	62.73 mm	101.60 mm	64.26 mm	Carbon Steel	45.97 mm	2 in	N/A	Connects Fractional Tube to Male NPT Thread
CFC 3M-2R-STEL	3 mm	12.9 mm	15.3 mm	28.70 mm	22.1 mm	Carbon Steel	2.4 mm	N/A	1/8 in	Connects Metric Tube to Male ISO Tapered Thread
CFC 3M-4R-STEL	3 mm	12.9 mm	15.3 mm	33.50 mm	26.9 mm	Carbon Steel	2.4 mm	N/A	1/4 in	Connects Metric Tube to Male ISO Tapered Thread
CFC 4M-2R-STEL	4 mm	13.7 mm	16.1 mm	29.7 mm	23.1 mm	Carbon Steel	2.4 mm	N/A	1/8 in	Connects Metric Tube to Male ISO Tapered Thread
CFC 6M-2R-STEL	6.0 mm	15.3 mm	17.7 mm	31.3 mm	23.9 mm	Carbon Steel	4.8 mm	N/A	1/8 in	Connects Metric Tube to Male ISO Tapered Thread
CFC 6M-4R-STEL	6.0 mm	15.3 mm	17.7 mm	35.8 mm	28.4 mm	Carbon Steel	4.8 mm	N/A	1/4 in	Connects Metric Tube to Male ISO Tapered Thread
CFC 6M-6R-STEL	6.0 mm	15.3 mm	17.7 mm	36.9 mm	29.5 mm	Carbon Steel	4.8 mm	N/A	3/8 in	Connects Metric Tube to Male ISO Tapered Thread
CFC 6M-8R-STEL	6.0 mm	15.3 mm	17.7 mm	42.5 mm	35.1 mm	Carbon Steel	4.8 mm	N/A	1/2 in	Connects Metric Tube to Male ISO Tapered Thread
CFC 8M-2R-STEL	8.0 mm	16.2 mm	18.6 mm	32.1 mm	24.6 mm	Carbon Steel	6.4 mm	N/A	1/8 in	Connects Metric Tube to Male ISO Tapered Thread
CFC 8M-4R-STEL	8.0 mm	16.2 mm	18.6 mm	37.0 mm	29.5 mm	Carbon Steel	6.4 mm	N/A	1/4 in	Connects Metric Tube to Male ISO Tapered Thread
CFC 8M-6R-STEL	8.0 mm	16.2 mm	18.6 mm	37.7 mm	30.2 mm	Carbon Steel	6.4 mm	N/A	3/8 in	Connects Metric Tube to Male ISO Tapered Thread
CFC 8M-8R-STEL	8.0 mm	16.2 mm	18.6 mm	43.3 mm	35.8 mm	Carbon Steel	6.4 mm	N/A	1/2 in	Connects Metric Tube to Male ISO Tapered Thread
CFC 10M-2R-STEL	10.0 mm	17.2 mm	19.5 mm	33.0 mm	25.4 mm	Carbon Steel	7.9 mm	N/A	1/8 in	Connects Metric Tube to Male ISO Tapered Thread
CFC 10M-4R-STEL	10.0 mm	17.2 mm	19.5 mm	37.80 mm	30.2 mm	Carbon Steel	7.9 mm	N/A	1/4 in	Connects Metric Tube to Male ISO Tapered Thread
CFC 10M-6R-STEL	10.0 mm	17.2 mm	19.5 mm	38.60 mm	31.0 mm	Carbon Steel	7.9 mm	N/A	3/8 in	Connects Metric Tube to Male ISO Tapered Thread
CFC 10M-8R-STEL	10.0 mm	17.2 mm	19.5 mm	44.2 mm	36.6 mm	Carbon Steel	7.9 mm	N/A	1/2 in	Connects Metric Tube to Male ISO Tapered Thread
CFC 12M-2R-STEL	12.0 mm	22.8 mm	22.0 mm	38.5 mm	28.4 mm	Carbon Steel	9.5 mm	N/A	1/8 in	Connects Metric Tube to Male ISO Tapered Thread
CFC 12M-4R-STEL	12.0 mm	22.8 mm	22.0 mm	40.3 mm	30.2 mm	Carbon Steel	9.5 mm	N/A	1/4 in	Connects Metric Tube to Male ISO Tapered Thread
CFC 12M-6R-STEL	12.0 mm	22.8 mm	22.0 mm	41.1 mm	31.0 mm	Carbon Steel	9.5 mm	N/A	3/8 in	Connects Metric Tube to Male ISO Tapered Thread
CFC 12M-8R-STEL	12.0 mm	22.8 mm	22.0 mm	46.7 mm	36.6 mm	Carbon Steel	9.5 mm	N/A	1/2 in	Connects Metric Tube to Male ISO Tapered Thread
CFC 12M-12R-STEL	12.0 mm	22.8 mm	22.0 mm	49.0 mm	38.9 mm	Carbon Steel	9.5 mm	N/A	3/4 in	Connects Metric Tube to Male ISO Tapered Thread
CFC 15M-8R-STEL	15 mm	24.4 mm	22.0 mm	46.7 mm	36.6 mm	Carbon Steel	11.9 mm	N/A	1/2 in	Connects Metric Tube to Male ISO Tapered Thread

Référence	Tube O.D. (D)	A	B	L	I	Material	Min. d	T (NPT)	T [R (PT)]	Type
CFC 16M-8R-STEL	16.0 mm	24.4 mm	22.0 mm	46.90 mm	36.8 mm	Carbon Steel	12.7 mm	N/A	1/2 in	Connects Metric Tube to Male ISO Tapered Thread
CFC 20M-8R-STEL	20 mm	26.0 mm	22.0 mm	47.9 mm	37.8 mm	Carbon Steel	15.9 mm	N/A	1/2 in	Connects Metric Tube to Male ISO Tapered Thread
CFC 20M-12R-STEL	20 mm	26.0 mm	22.0 mm	49.7 mm	39.6 mm	Carbon Steel	15.9 mm	N/A	3/4 in	Connects Metric Tube to Male ISO Tapered Thread
CFC 22M-12R-STEL	22 mm	26.0 mm	22.0 mm	49.7 mm	39.6 mm	Carbon Steel	18.3 mm	N/A	3/4 in	Connects Metric Tube to Male ISO Tapered Thread
CFC 22M-16R-STEL	22 mm	26.0 mm	22.0 mm	57.9 mm	47.8 mm	Carbon Steel	18.3 mm	N/A	1 in	Connects Metric Tube to Male ISO Tapered Thread
CFC 25M-12R-STEL	25 mm	31.3 mm	26.5 mm	53.40 mm	41.1 mm	Carbon Steel	21.8 mm	N/A	3/4 in	Connects Metric Tube to Male ISO Tapered Thread
CFC 25M-16R-STEL	25 mm	31.3 mm	26.5 mm	62.3 mm	50.0 mm	Carbon Steel	21.8 mm	N/A	1 in	Connects Metric Tube to Male ISO Tapered Thread
CFC 1-1N-BRAS	1/16 in 1.58 mm	8.63 mm	10.92 mm	23.62 mm	19.81 mm	Brass	1.27 mm	1/16 in	N/A	Connects Fractional Tube to Male NPT Thread
CFC 1-2N-BRAS	1/16 in 1.58 mm	8.63 mm	10.92 mm	24.38 mm	20.57 mm	Brass	1.27 mm	1/8 in	N/A	Connects Fractional Tube to Male NPT Thread
CFC 2-2N-BRAS	1/8 in 3.17 mm	12.70 mm	15.24 mm	28.70 mm	22.09 mm	Brass	2.28 mm	1/8 in	N/A	Connects Fractional Tube to Male NPT Thread
CFC 2-4N-BRAS	1/8 in 3.17 mm	12.70 mm	15.24 mm	33.52 mm	26.92 mm	Brass	2.28 mm	1/4 in	N/A	Connects Fractional Tube to Male NPT Thread
CFC 3-2N-BRAS	3/16 in 4.76 mm	13.71 mm	16.00 mm	29.71 mm	23.11 mm	Brass	3.04 mm	1/8 in	N/A	Connects Fractional Tube to Male NPT Thread
CFC 4-2N-BRAS	1/4 in 6.35 mm	15.24 mm	17.78 mm	31.24 mm	23.87 mm	Brass	4.82 mm	1/8 in	N/A	Connects Fractional Tube to Male NPT Thread
CFC 4-4N-BRAS	1/4 in 6.35 mm	15.24 mm	17.78 mm	35.81 mm	28.44 mm	Brass	4.82 mm	1/4 in	N/A	Connects Fractional Tube to Male NPT Thread
CFC 4-6N-BRAS	1/4 in 6.35 mm	15.24 mm	17.78 mm	37.59 mm	30.22 mm	Brass	4.82 mm	3/8 in	N/A	Connects Fractional Tube to Male NPT Thread
CFC 4-8N-BRAS	1/4 in 6.35 mm	15.24 mm	17.78 mm	42.41 mm	35.05 mm	Brass	4.82 mm	1/2 in	N/A	Connects Fractional Tube to Male NPT Thread
CFC 5-2N-BRAS	5/16 in 7.93 mm	16.25 mm	18.54 mm	32.0 mm	24.63 mm	Brass	6.35 mm	1/8 in	N/A	Connects Fractional Tube to Male NPT Thread
CFC 5-4N-BRAS	5/16 in 7.93 mm	16.25 mm	18.54 mm	36.83 mm	29.46 mm	Brass	6.35 mm	1/4 in	N/A	Connects Fractional Tube to Male NPT Thread
CFC 6-2N-BRAS	3/8 in 9.52 mm	16.76 mm	19.30 mm	32.76 mm	25.4 mm	Brass	7.11 mm	1/8 in	N/A	Connects Fractional Tube to Male NPT Thread
CFC 6-4N-BRAS	3/8 in 9.52 mm	16.76 mm	19.30 mm	37.59 mm	30.22 mm	Brass	7.11 mm	1/4 in	N/A	Connects Fractional Tube to Male NPT Thread

Référence	Tube O.D. (D)	A	B	L	I	Material	Min. d	T (NPT)	T [R (PT)]	Type
CFC 6-6N-BRAS	3/8 in 9.52 mm	16.76 mm	19.30 mm	39.11 mm	31.75 mm	Brass	7.11 mm	3/8 in	N/A	Connects Fractional Tube to Male NPT Thread
CFC 6-8N-BRAS	3/8 in 9.52 mm	16.76 mm	19.30 mm	43.94 mm	36.57 mm	Brass	7.11 mm	1/2 in	N/A	Connects Fractional Tube to Male NPT Thread
CFC 6-12N-BRAS	3/8 in 9.52 mm	16.76 mm	19.30 mm	47.75 mm	40.38 mm	Brass	7.11 mm	3/4 in	N/A	Connects Fractional Tube to Male NPT Thread
CFC 8-4N-BRAS	1/2 in 12.7 mm	22.86 mm	21.84 mm	40.38 mm	30.22 mm	Brass	10.41 mm	1/4 in	N/A	Connects Fractional Tube to Male NPT Thread
CFC 8-6N-BRAS	1/2 in 12.7 mm	22.86 mm	21.84 mm	41.91 mm	31.75 mm	Brass	10.41 mm	3/8 in	N/A	Connects Fractional Tube to Male NPT Thread
CFC 8-8N-BRAS	1/2 in 12.7 mm	22.86 mm	21.84 mm	46.73 mm	36.57 mm	Brass	10.41 mm	1/2 in	N/A	Connects Fractional Tube to Male NPT Thread
CFC 8-12N-BRAS	1/2 in 12.7 mm	22.86 mm	21.84 mm	48.26 mm	38.10 mm	Brass	10.41 mm	3/4 in	N/A	Connects Fractional Tube to Male NPT Thread
CFC 10-6N-BRAS	5/8 in 15.87 mm	24.38 mm	21.84 mm	41.91 mm	31.75 mm	Brass	12.7 mm	3/8 in	N/A	Connects Fractional Tube to Male NPT Thread
CFC 10-8N-BRAS	5/8 in 15.87 mm	24.38 mm	21.84 mm	46.73 mm	36.57 mm	Brass	12.7 mm	1/2 in	N/A	Connects Fractional Tube to Male NPT Thread
CFC 10-12N-BRAS	5/8 in 15.87 mm	24.38 mm	21.84 mm	48.26 mm	38.10 mm	Brass	12.7 mm	3/4 in	N/A	Connects Fractional Tube to Male NPT Thread
CFC 12-8N-BRAS	3/4 in 19.05 mm	24.38 mm	21.84 mm	46.73 mm	36.57 mm	Brass	15.74 mm	1/2 in	N/A	Connects Fractional Tube to Male NPT Thread
CFC 12-12N-BRAS	3/4 in 19.05 mm	24.38 mm	21.84 mm	48.26 mm	38.10 mm	Brass	15.74 mm	3/4 in	N/A	Connects Fractional Tube to Male NPT Thread
CFC 14-12N-BRAS	7/8 in 22.22 mm	25.90 mm	21.84 mm	49.78 mm	39.62 mm	Brass	18.28 mm	3/4 in	N/A	Connects Fractional Tube to Male NPT Thread
CFC 16-12N-BRAS	1 in 25.4 mm	31.24 mm	26.41 mm	53.34 mm	41.14 mm	Brass	22.35 mm	3/4 in	N/A	Connects Fractional Tube to Male NPT Thread
CFC 16-16N-BRAS	1 in 25.4 mm	31.24 mm	26.41 mm	62.23 mm	50.03 mm	Brass	22.35 mm	1 in	N/A	Connects Fractional Tube to Male NPT Thread
CFC 20-20N-BRAS	1 1/4 in 31.75 mm	41.14 mm	38.86 mm	74.67 mm	52.57 mm	Brass	27.68 mm	1 1/4 in	N/A	Connects Fractional Tube to Male NPT Thread
CFC 24-24N-BRAS	1 1/2 in 38.10 mm	50.03 mm	45.21 mm	83.31 mm	56.13 mm	Brass	34.03 mm	1 1/2 in	N/A	Connects Fractional Tube to Male NPT Thread

Référence	Tube O.D. (D)	A	B	L	I	Material	Min. d	T (NPT)	T [R (PT)]	Type
CFC 32-32N-BRAS	2 in 50.80 mm	67.56 mm	62.73 mm	101.60 mm	64.26 mm	Brass	45.97 mm	2 in	N/A	Connects Fractional Tube to Male NPT Thread
CFC 3M-2R-BRAS	3 mm	12.9 mm	15.3 mm	28.70 mm	22.1 mm	Brass	2.4 mm	N/A	1/8 in	Connects Metric Tube to Male ISO Tapered Thread
CFC 3M-4R-BRAS	3 mm	12.9 mm	15.3 mm	33.50 mm	26.9 mm	Brass	2.4 mm	N/A	1/4 in	Connects Metric Tube to Male ISO Tapered Thread
CFC 4M-2R-BRAS	4 mm	13.7 mm	16.1 mm	29.7 mm	23.1 mm	Brass	2.4 mm	N/A	1/8 in	Connects Metric Tube to Male ISO Tapered Thread
CFC 6M-2R-BRAS	6.0 mm	15.3 mm	17.7 mm	31.3 mm	23.9 mm	Brass	4.8 mm	N/A	1/8 in	Connects Metric Tube to Male ISO Tapered Thread
CFC 6M-4R-BRAS	6.0 mm	15.3 mm	17.7 mm	35.8 mm	28.4 mm	Brass	4.8 mm	N/A	1/4 in	Connects Metric Tube to Male ISO Tapered Thread
CFC 6M-6R-BRAS	6.0 mm	15.3 mm	17.7 mm	36.9 mm	29.5 mm	Brass	4.8 mm	N/A	3/8 in	Connects Metric Tube to Male ISO Tapered Thread
CFC 6M-8R-BRAS	6.0 mm	15.3 mm	17.7 mm	42.5 mm	35.1 mm	Brass	4.8 mm	N/A	1/2 in	Connects Metric Tube to Male ISO Tapered Thread
CFC 8M-2R-BRAS	8.0 mm	16.2 mm	18.6 mm	32.1 mm	24.6 mm	Brass	6.4 mm	N/A	1/8 in	Connects Metric Tube to Male ISO Tapered Thread
CFC 8M-4R-BRAS	8.0 mm	16.2 mm	18.6 mm	37.0 mm	29.5 mm	Brass	6.4 mm	N/A	1/4 in	Connects Metric Tube to Male ISO Tapered Thread
CFC 8M-6R-BRAS	8.0 mm	16.2 mm	18.6 mm	37.7 mm	30.2 mm	Brass	6.4 mm	N/A	3/8 in	Connects Metric Tube to Male ISO Tapered Thread
CFC 8M-8R-BRAS	8.0 mm	16.2 mm	18.6 mm	43.3 mm	35.8 mm	Brass	6.4 mm	N/A	1/2 in	Connects Metric Tube to Male ISO Tapered Thread
CFC 10M-2R-BRAS	10.0 mm	17.2 mm	19.5 mm	33.0 mm	25.4 mm	Brass	7.9 mm	N/A	1/8 in	Connects Metric Tube to Male ISO Tapered Thread
CFC 10M-4R-BRAS	10.0 mm	17.2 mm	19.5 mm	37.80 mm	30.2 mm	Brass	7.9 mm	N/A	1/4 in	Connects Metric Tube to Male ISO Tapered Thread
CFC 10M-6R-BRAS	10.0 mm	17.2 mm	19.5 mm	38.60 mm	31.0 mm	Brass	7.9 mm	N/A	3/8 in	Connects Metric Tube to Male ISO Tapered Thread
CFC 10M-8R-BRAS	10.0 mm	17.2 mm	19.5 mm	44.2 mm	36.6 mm	Brass	7.9 mm	N/A	1/2 in	Connects Metric Tube to Male ISO Tapered Thread
CFC 12M-2R-BRAS	12.0 mm	22.8 mm	22.0 mm	38.5 mm	28.4 mm	Brass	9.5 mm	N/A	1/8 in	Connects Metric Tube to Male ISO Tapered Thread
CFC 12M-4R-BRAS	12.0 mm	22.8 mm	22.0 mm	40.3 mm	30.2 mm	Brass	9.5 mm	N/A	1/4 in	Connects Metric Tube to Male ISO Tapered Thread
CFC 12M-6R-BRAS	12.0 mm	22.8 mm	22.0 mm	41.1 mm	31.0 mm	Brass	9.5 mm	N/A	3/8 in	Connects Metric Tube to Male ISO Tapered Thread
CFC 12M-8R-BRAS	12.0 mm	22.8 mm	22.0 mm	46.7 mm	36.6 mm	Brass	9.5 mm	N/A	1/2 in	Connects Metric Tube to Male ISO Tapered Thread
CFC 12M-12R-BRAS	12.0 mm	22.8 mm	22.0 mm	49.0 mm	38.9 mm	Brass	9.5 mm	N/A	3/4 in	Connects Metric Tube to Male ISO Tapered Thread
CFC 15M-8R-BRAS	15 mm	24.4 mm	22.0 mm	46.7 mm	36.6 mm	Brass	11.9 mm	N/A	1/2 in	Connects Metric Tube to Male ISO Tapered Thread
CFC 16M-8R-BRAS	16.0 mm	24.4 mm	22.0 mm	46.90 mm	36.8 mm	Brass	12.7 mm	N/A	1/2 in	Connects Metric Tube to Male ISO Tapered Thread
CFC 20M-8R-BRAS	20 mm	26.0 mm	22.0 mm	47.9 mm	37.8 mm	Brass	15.9 mm	N/A	1/2 in	Connects Metric Tube to Male ISO Tapered Thread
CFC 20M-12R-BRAS	20 mm	26.0 mm	22.0 mm	49.7 mm	39.6 mm	Brass	15.9 mm	N/A	3/4 in	Connects Metric Tube to Male ISO Tapered Thread
CFC 22M-12R-BRAS	22 mm	26.0 mm	22.0 mm	49.7 mm	39.6 mm	Brass	18.3 mm	N/A	3/4 in	Connects Metric Tube to Male ISO Tapered Thread
CFC 22M-16R-BRAS	22 mm	26.0 mm	22.0 mm	57.9 mm	47.8 mm	Brass	18.3 mm	N/A	1 in	Connects Metric Tube to Male ISO Tapered Thread

Référence	Tube O.D. (D)	A	B	L	I	Material	Min. d	T (NPT)	T [R (PT)]	Type
CFC 25M-12R-BRAS	25 mm	31.3 mm	26.5 mm	53.40 mm	41.1 mm	Brass	21.8 mm	N/A	3/4 in	Connects Metric Tube to Male ISO Tapered Thread
CFC 25M-16R-BRAS	25 mm	31.3 mm	26.5 mm	62.3 mm	50.0 mm	Brass	21.8 mm	N/A	1 in	Connects Metric Tube to Male ISO Tapered Thread