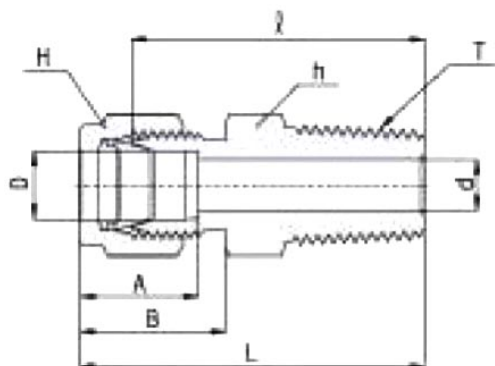


Produits > Instrumentation > Raccords double bague > Doubles bagues Hy-Lok > Union Mâle

Union Simple Male CMC



Référence	Tube O.D. (D)	A	B	Min. d	L	I	Material	T (NPT)	T [R (PT)]	Type
CMC 1-1N-S316	1/16 in 1.58 mm	8.63 mm	10.92 mm	1.27 mm	23.83 mm	20.00 mm	316 Stainless Steel	1/16 mm	N/A	Connects Fractional Tube to Female NPT Thread
CMC 1-2N-S316	1/16 in 1.58 mm	8.63 mm	10.92 mm	1.27 mm	26.23 mm	22.35 mm	316 Stainless Steel	1/8 mm	N/A	Connects Fractional Tube to Female NPT Thread
CMC 1-4N-S316	1/16 in 1.58 mm	8.63 mm	10.92 mm	1.27 mm	30.98 mm	27.17 mm	316 Stainless Steel	1/4 mm	N/A	Connects Fractional Tube to Female NPT Thread
CMC 2-1N-S316	1/8 in 3.17 mm	12.70 mm	15.24 mm	2.28 mm	29.71 mm	23.11 mm	316 Stainless Steel	1/16 mm	N/A	Connects Fractional Tube to Female NPT Thread
CMC 2-2N-S316	1/8 in 3.17 mm	12.70 mm	15.24 mm	2.28 mm	30.48 mm	23.87 mm	316 Stainless Steel	1/8 mm	N/A	Connects Fractional Tube to Female NPT Thread
CMC 2-4N-S316	1/8 in 3.17 mm	12.70 mm	15.24 mm	2.28 mm	35.56 mm	28.95 mm	316 Stainless Steel	1/4 mm	N/A	Connects Fractional Tube to Female NPT Thread
CMC 2-6N-S316	1/8 in 3.17 mm	12.70 mm	15.24 mm	2.28 mm	35.81 mm	29.21 mm	316 Stainless Steel	3/8 mm	N/A	Connects Fractional Tube to Female NPT Thread

Référence	Tube O.D. (D)	A	B	Min. d	L	I	Material	T (NPT)	T [R (PT)]	Type
CMC 2-8N-S316	1/8 in 3.17 mm	12.70 mm	15.24 mm	2.28 mm	42.16 mm	35.56 mm	316 Stainless Steel	1/2 mm	N/A	Connects Fractional Tube to Female NPT Thread
CMC 3 -2N-S316	3/16 in 4.76 mm	13.71 mm	16.00 mm	3.04 mm	31.24 mm	24.63 mm	316 Stainless Steel	1/8 mm	N/A	Connects Fractional Tube to Female NPT Thread
CMC 3-4N-S316	3/16 in 4.76 mm	13.71 mm	16.00 mm	3.04 mm	36.32 mm	29.71 mm	316 Stainless Steel	1/4 mm	N/A	Connects Fractional Tube to Female NPT Thread
CMC 4-1N-S316	1/4 in 6.35 mm	15.24 mm	17.78 mm	4.82 mm	32.76 mm	25.4 mm	316 Stainless Steel	1/16 mm	N/A	Connects Fractional Tube to Female NPT Thread
CMC 4-2N-S316	1/4 in 6.35 mm	15.24 mm	17.78 mm	4.82 mm	32.76 mm	25.4 mm	316 Stainless Steel	1/8 mm	N/A	Connects Fractional Tube to Female NPT Thread
CMC 4-4N-S316	1/4 in 6.35 mm	15.24 mm	17.78 mm	4.82 mm	37.84 mm	30.48 mm	316 Stainless Steel	1/4 mm	N/A	Connects Fractional Tube to Female NPT Thread
CMC 4-6N-S316	1/4 in 6.35 mm	15.24 mm	17.78 mm	4.82 mm	38.35 mm	30.98 mm	316 Stainless Steel	3/8 mm	N/A	Connects Fractional Tube to Female NPT Thread
CMC 4-8N-S316	1/4 in 6.35 mm	15.24 mm	17.78 mm	4.82 mm	44.70 mm	37.33 mm	316 Stainless Steel	1/2 mm	N/A	Connects Fractional Tube to Female NPT Thread
CMC 4-12N-S316	1/4 in 6.35 mm	15.24 mm	17.78 mm	4.82 mm	46.22 mm	38.86 mm	316 Stainless Steel	3/4 mm	N/A	Connects Fractional Tube to Female NPT Thread
CMC 5-2N-S316	5/16 in 7.93 mm	16.25 mm	18.54 mm	4.82 mm	34.03 mm	26.67 mm	316 Stainless Steel	1/8 mm	N/A	Connects Fractional Tube to Female NPT Thread
CMC 5-4N-S316	5/16 in 7.93 mm	16.25 mm	18.54 mm	6.35 mm	38.60 mm	31.24 mm	316 Stainless Steel	1/4 mm	N/A	Connects Fractional Tube to Female NPT Thread
CMC 5-6N-S316	5/16 in 7.93 mm	16.25 mm	18.54 mm	6.35 mm	39.11 mm	31.75 mm	316 Stainless Steel	3/8 mm	N/A	Connects Fractional Tube to Female NPT Thread
CMC 6-2N-S316	3/8 in 9.52 mm	16.76 mm	19.30 mm	4.82 mm	35.30 mm	27.94 mm	316 Stainless Steel	1/8 mm	N/A	Connects Fractional Tube to Female NPT Thread
CMC 6-4N-S316	3/8 in 9.52 mm	16.76 mm	19.30 mm	7.11 mm	39.87 mm	32.51 mm	316 Stainless Steel	1/4 mm	N/A	Connects Fractional Tube to Female NPT Thread
CMC 6-6N-S316	3/8 in 9.52 mm	16.76 mm	19.30 mm	7.11 mm	39.87 mm	32.51 mm	316 Stainless Steel	3/8 mm	N/A	Connects Fractional Tube to Female NPT Thread
CMC 6-8N-S316	3/8 in 9.52 mm	16.76 mm	19.30 mm	7.11 mm	46.22 mm	38.86 mm	316 Stainless Steel	1/2 mm	N/A	Connects Fractional Tube to Female NPT Thread
CMC 6-12N-S316	3/8 in 9.52 mm	16.76 mm	19.30 mm	7.11 mm	47.75 mm	40.38 mm	316 Stainless Steel	3/4 mm	N/A	Connects Fractional Tube to Female NPT Thread

Référence	Tube O.D. (D)	A	B	Min. d	L	I	Material	T (NPT)	T [R (PT)]	Type
CMC 8-2N-S316	1/2 in 12.7 mm	22.86 mm	21.84 mm	4.82 mm	38.86 mm	28.70 mm	316 Stainless Steel	1/8 mm	N/A	Connects Fractional Tube to Female NPT Thread
CMC 8-4N-S316	1/2 in 12.7 mm	22.86 mm	21.84 mm	7.11 mm	43.43 mm	33.27 mm	316 Stainless Steel	1/4 mm	N/A	Connects Fractional Tube to Female NPT Thread
CMC 8-6N-S316	1/2 in 12.7 mm	22.86 mm	21.84 mm	9.65 mm	43.43 mm	33.27 mm	316 Stainless Steel	3/8 mm	N/A	Connects Fractional Tube to Female NPT Thread
CMC 8-8N-S316	1/2 in 12.7 mm	22.86 mm	21.84 mm	10.41 mm	49.02 mm	38.86 mm	316 Stainless Steel	1/2 mm	N/A	Connects Fractional Tube to Female NPT Thread
CMC 8-12N-S316	1/2 in 12.7 mm	22.86 mm	21.84 mm	10.41 mm	50.54 mm	40.38 mm	316 Stainless Steel	3/4 mm	N/A	Connects Fractional Tube to Female NPT Thread
CMC 8-16N-S316	1/2 in 12.7 mm	22.86 mm	21.84 mm	10.41 mm	57.15 mm	46.99 mm	316 Stainless Steel	1 mm	N/A	Connects Fractional Tube to Female NPT Thread
CMC 10-6N-S316	5/8 in 15.87 mm	24.38 mm	21.84 mm	9.65 mm	44.19 mm	34.03 mm	316 Stainless Steel	3/8 mm	N/A	Connects Fractional Tube to Female NPT Thread
CMC 10-8N-S316	5/8 in 15.87 mm	24.38 mm	21.84 mm	11.93 mm	49.02 mm	38.86 mm	316 Stainless Steel	1/2 mm	N/A	Connects Fractional Tube to Female NPT Thread
CMC 10-12N-S316	5/8 in 15.87 mm	24.38 mm	21.84 mm	12.70 mm	50.54 mm	40.38 mm	316 Stainless Steel	3/4 mm	N/A	Connects Fractional Tube to Female NPT Thread
CMC 12-8N-S316	3/4 in 19.05 mm	24.38 mm	21.84 mm	11.93 mm	50.54 mm	40.38 mm	316 Stainless Steel	1/2 mm	N/A	Connects Fractional Tube to Female NPT Thread
CMC 12-12N-S316	3/4 in 19.05 mm	24.38 mm	21.84 mm	15.74 mm	50.54 mm	40.38 mm	316 Stainless Steel	3/4 mm	N/A	Connects Fractional Tube to Female NPT Thread
CMC 12-16N-S316	3/4 in 19.05 mm	24.38 mm	21.84 mm	15.74 mm	57.15 mm	46.99 mm	316 Stainless Steel	1 mm	N/A	Connects Fractional Tube to Female NPT Thread
CMC 14-12N-S316	7/8 in 22.22 mm	25.90 mm	21.84 mm	15.74 mm	50.54 mm	40.38 mm	316 Stainless Steel	3/4 mm	N/A	Connects Fractional Tube to Female NPT Thread
CMC 14-16N-S316	7/8 in 22.22 mm	25.90 mm	21.84 mm	18.28 mm	57.15 mm	46.99 mm	316 Stainless Steel	1 mm	N/A	Connects Fractional Tube to Female NPT Thread
CMC 16-8N-S316	1 in 25.4 mm	31.24 mm	26.41 mm	11.93 mm	57.4 mm	45.21 mm	316 Stainless Steel	1/2 mm	N/A	Connects Fractional Tube to Female NPT Thread
CMC 16-12N-S316	1 in 25.4 mm	31.24 mm	26.41 mm	15.74 mm	57.4 mm	45.21 mm	316 Stainless Steel	3/4 mm	N/A	Connects Fractional Tube to Female NPT Thread
CMC 16-16N-S316	1 in 25.4 mm	31.24 mm	26.41 mm	22.35 mm	62.23 mm	50.03 mm	316 Stainless Steel	1 mm	N/A	Connects Fractional Tube to Female NPT Thread

Référence	Tube O.D. (D)	A	B	Min. d	L	I	Material	T (NPT)	T [R (PT)]	Type
CMC 20-16N-S316	1 1/4 in 31.75 mm	41.14 mm	38.86 mm	22.35 mm	77.21 mm	55.11 mm	316 Stainless Steel	1 mm	N/A	Connects Fractional Tube to Female NPT Thread
CMC 20-20N-S316	1 1/4 in 31.75 mm	41.14 mm	38.86 mm	27.68 mm	77.21 mm	55.11 mm	316 Stainless Steel	1 1/4 mm	N/A	Connects Fractional Tube to Female NPT Thread
CMC 24-24N-S316	1 1/2 in 38.10 mm	50.03 mm	45.21 mm	34.03 mm	88.90 mm	61.72 mm	316 Stainless Steel	1 1/2 mm	N/A	Connects Fractional Tube to Female NPT Thread
CMC 32-32N-S316	2 in 50.80 mm	67.56 mm	62.73 mm	45.97 mm	113.53 mm	76.20 mm	316 Stainless Steel	2 mm	N/A	Connects Fractional Tube to Female NPT Thread
CMC 2M-2R-S316	2 mm	12.9 mm	15.3 mm	1.7 mm	30.5 mm	23.9 mm	316 Stainless Steel	N/A	1/8 mm	Connects Metric Tube to Female ISO Tapered Thread
CMC 3M-2R-S316	3 mm	12.9 mm	15.3 mm	2.4 mm	30.5 mm	23.9 mm	316 Stainless Steel	N/A	1/8 mm	Connects Metric Tube to Female ISO Tapered Thread
CMC 3M-4R-S316	3 mm	12.9 mm	15.3 mm	2.4 mm	35.6 mm	29.0 mm	316 Stainless Steel	N/A	1/4 mm	Connects Metric Tube to Female ISO Tapered Thread
CMC 4M-2R-S316	4 mm	13.7 mm	16.1 mm	2.4 mm	31.2 mm	24.6 mm	316 Stainless Steel	N/A	1/8 mm	Connects Metric Tube to Female ISO Tapered Thread
CMC 4M-4R-S316	4 mm	13.7 mm	16.1 mm	2.4 mm	36.3 mm	29.7 mm	316 Stainless Steel	N/A	1/4 mm	Connects Metric Tube to Female ISO Tapered Thread
CMC 6M-2R-S316	6.0 mm	15.3 mm	17.7 mm	4.8 mm	32.8 mm	25.4 mm	316 Stainless Steel	N/A	1/8 mm	Connects Metric Tube to Female ISO Tapered Thread
CMC 6M-4R-S316	6.0 mm	15.3 mm	17.7 mm	4.8 mm	37.9 mm	30.5 mm	316 Stainless Steel	N/A	1/4 mm	Connects Metric Tube to Female ISO Tapered Thread
CMC 6M-6R-S316	6.0 mm	15.3 mm	17.7 mm	4.8 mm	38.4 mm	31.0 mm	316 Stainless Steel	N/A	3/8 mm	Connects Metric Tube to Female ISO Tapered Thread
CMC 6M-8R-S316	6.0 mm	15.3 mm	17.7 mm	4.8 mm	44.70 mm	37.3 mm	316 Stainless Steel	N/A	1/2 mm	Connects Metric Tube to Female ISO Tapered Thread
CMC 8M-2R-S316	8.0 mm	16.2 mm	18.6 mm	4.8 mm	34.2 mm	26.7 mm	316 Stainless Steel	N/A	1/8 mm	Connects Metric Tube to Female ISO Tapered Thread
CMC 8M-4R-S316	8.0 mm	16.2 mm	18.6 mm	6.4 mm	38.7 mm	31.2 mm	316 Stainless Steel	N/A	1/4 mm	Connects Metric Tube to Female ISO Tapered Thread
CMC 8M-6R-S316	8.0 mm	16.2 mm	18.6 mm	6.4 mm	39.2 mm	31.8 mm	316 Stainless Steel	N/A	3/8 mm	Connects Metric Tube to Female ISO Tapered Thread
CMC 8M-8R-S316	8.0 mm	16.2 mm	18.6 mm	6.4 mm	45.6 mm	38.10 mm	316 Stainless Steel	N/A	1/2 mm	Connects Metric Tube to Female ISO Tapered Thread
CMC 10M-2R-S316	10.0 mm	17.2 mm	19.5 mm	4.8 mm	36.3 mm	28.7 mm	316 Stainless Steel	N/A	1/8 mm	Connects Metric Tube to Female ISO Tapered Thread
CMC 10M-4R-S316	10.0 mm	17.2 mm	19.5 mm	7.1 mm	40.9 mm	33.3 mm	316 Stainless Steel	N/A	1/4 mm	Connects Metric Tube to Female ISO Tapered Thread
CMC 10M-6R-S316	10.0 mm	17.2 mm	19.5 mm	7.9 mm	40.9 mm	33.3 mm	316 Stainless Steel	N/A	3/8 mm	Connects Metric Tube to Female ISO Tapered Thread
CMC 10M-8R-S316	10.0 mm	17.2 mm	19.5 mm	7.9 mm	46.5 mm	38.9 mm	316 Stainless Steel	N/A	1/2 mm	Connects Metric Tube to Female ISO Tapered Thread
CMC 12M-4R-S316	12.0 mm	22.8 mm	22.0 mm	7.1 mm	43.4 mm	33.3 mm	316 Stainless Steel	N/A	1/4 mm	Connects Metric Tube to Female ISO Tapered Thread
CMC 12M-6R-S316	12.0 mm	22.8 mm	22.0 mm	9.5 mm	43.4 mm	33.3 mm	316 Stainless Steel	N/A	3/8 mm	Connects Metric Tube to Female ISO Tapered Thread
CMC 12M-8R-S316	12.0 mm	22.8 mm	22.0 mm	9.5 mm	49.0 mm	38.9 mm	316 Stainless Steel	N/A	1/2 mm	Connects Metric Tube to Female ISO Tapered Thread
CMC 12M-12R-S316	12.0 mm	22.8 mm	22.0 mm	9.5 mm	50.50 mm	40.4 mm	316 Stainless Steel	N/A	3/4 mm	Connects Metric Tube to Female ISO Tapered Thread
CMC 15M-8R-S316	15 mm	24.4 mm	22.0 mm	11.9 mm	49.0 mm	38.9 mm	316 Stainless Steel	N/A	1/2 mm	Connects Metric Tube to Female ISO Tapered Thread

Référence	Tube O.D. (D)	A	B	Min. d	L	I	Material	T (NPT)	T [R (PT)]	Type
CMC 16M-4R-S316	16.0 mm	24.4 mm	22.0 mm	7.1 mm	44.1 mm	34.0 mm	316 Stainless Steel	N/A	1/4 mm	Connects Metric Tube to Female ISO Tapered Thread
CMC 16M-6R-S316	16.0 mm	24.4 mm	22.0 mm	9.5 mm	44.1 mm	34.0 mm	316 Stainless Steel	N/A	3/8 mm	Connects Metric Tube to Female ISO Tapered Thread
CMC 16M-8R-S316	16.0 mm	24.4 mm	22.0 mm	11.9 mm	49.0 mm	38.9 mm	316 Stainless Steel	N/A	1/2 mm	Connects Metric Tube to Female ISO Tapered Thread
CMC 16M-12R-S316	16.0 mm	24.4 mm	22.0 mm	12.7 mm	49.0 mm	38.9 mm	316 Stainless Steel	N/A	3/4 mm	Connects Metric Tube to Female ISO Tapered Thread
CMC 18M-8R-S316	18 mm	24.4 mm	22.0 mm	11.9 mm	50.50 mm	40.4 mm	316 Stainless Steel	N/A	1/2 mm	Connects Metric Tube to Female ISO Tapered Thread
CMC 18M-12R-S316	18 mm	24.4 mm	22.0 mm	15.1 mm	50.50 mm	40.4 mm	316 Stainless Steel	N/A	3/4 mm	Connects Metric Tube to Female ISO Tapered Thread
CMC 20M-8R-S316	20 mm	26.0 mm	22.0 mm	11.9 mm	52.30 mm	42.2 mm	316 Stainless Steel	N/A	1/2 mm	Connects Metric Tube to Female ISO Tapered Thread
CMC 20M-12R-S316	20 mm	26.0 mm	22.0 mm	15.9 mm	52.30 mm	42.2 mm	316 Stainless Steel	N/A	3/4 mm	Connects Metric Tube to Female ISO Tapered Thread
CMC 22M-12R-S316	22 mm	26.0 mm	22.0 mm	15.9 mm	52.30 mm	42.2 mm	316 Stainless Steel	N/A	3/4 mm	Connects Metric Tube to Female ISO Tapered Thread
CMC 22M-16R-S316	22 mm	26.0 mm	22.0 mm	18.3 mm	57.0 mm	47.0 mm	316 Stainless Steel	N/A	1 mm	Connects Metric Tube to Female ISO Tapered Thread
CMC 25M-12R-S316	25 mm	31.3 mm	26.5 mm	15.9 mm	57.5 mm	45.2 mm	316 Stainless Steel	N/A	3/4 mm	Connects Metric Tube to Female ISO Tapered Thread
CMC 25M-16R-S316	25 mm	31.3 mm	26.5 mm	21.8 mm	62.3 mm	50.0 mm	316 Stainless Steel	N/A	1 mm	Connects Metric Tube to Female ISO Tapered Thread
CMC 28M-16R-S316	28 mm	36.6 mm	36.6 mm	21.8 mm	72.4 mm	51.6 mm	316 Stainless Steel	N/A	1 mm	Connects Metric Tube to Female ISO Tapered Thread
CMC 28M-20R-S316	28 mm	36.6 mm	36.6 mm	21.8 mm	73.1 mm	52.3 mm	316 Stainless Steel	N/A	1 1/4 mm	Connects Metric Tube to Female ISO Tapered Thread
CMC 32M-20R-S316	32 mm	42.0 mm	41.6 mm	28.6 mm	79.6 mm	56.6 mm	316 Stainless Steel	N/A	1 1/4 mm	Connects Metric Tube to Female ISO Tapered Thread
CMC 32M-24R-S316	38 mm	49.4 mm	47.9 mm	33.7 mm	91.6 mm	64.0 mm	316 Stainless Steel	N/A	1 1/2 mm	Connects Metric Tube to Female ISO Tapered Thread
CMC 1-1N-STEL	1/16 in 1.58 mm	8.63 mm	10.92 mm	1.27 mm	23.83 mm	20.00 mm	Carbon Steel	1/16 mm	N/A	Connects Fractional Tube to Female NPT Thread
CMC 1-2N-STEL	1/16 in 1.58 mm	8.63 mm	10.92 mm	1.27 mm	26.23 mm	22.35 mm	Carbon Steel	1/8 mm	N/A	Connects Fractional Tube to Female NPT Thread
CMC 1-4N-STEL	1/16 in 1.58 mm	8.63 mm	10.92 mm	1.27 mm	30.98 mm	27.17 mm	Carbon Steel	1/4 mm	N/A	Connects Fractional Tube to Female NPT Thread
CMC 2-1N-STEL	1/8 in 3.17 mm	12.70 mm	15.24 mm	2.28 mm	29.71 mm	23.11 mm	Carbon Steel	1/16 mm	N/A	Connects Fractional Tube to Female NPT Thread
CMC 2-2N-STEL	1/8 in 3.17 mm	12.70 mm	15.24 mm	2.28 mm	30.48 mm	23.87 mm	Carbon Steel	1/8 mm	N/A	Connects Fractional Tube to Female NPT Thread
CMC 2-4N-STEL	1/8 in 3.17 mm	12.70 mm	15.24 mm	2.28 mm	35.56 mm	28.95 mm	Carbon Steel	1/4 mm	N/A	Connects Fractional Tube to Female NPT Thread
CMC 2-6N-STEL	1/8 in 3.17 mm	12.70 mm	15.24 mm	2.28 mm	35.81 mm	29.21 mm	Carbon Steel	3/8 mm	N/A	Connects Fractional Tube to Female NPT Thread

Référence	Tube O.D. (D)	A	B	Min. d	L	I	Material	T (NPT)	T [R (PT)]	Type
CMC 2-8N-STEL	1/8 in 3.17 mm	12.70 mm	15.24 mm	2.28 mm	42.16 mm	35.56 mm	Carbon Steel	1/2 mm	N/A	Connects Fractional Tube to Female NPT Thread
CMC 3 -2N-STEL	3/16 in 4.76 mm	13.71 mm	16.00 mm	3.04 mm	31.24 mm	24.63 mm	Carbon Steel	1/8 mm	N/A	Connects Fractional Tube to Female NPT Thread
CMC 3-4N-STEL	3/16 in 4.76 mm	13.71 mm	16.00 mm	3.04 mm	36.32 mm	29.71 mm	Carbon Steel	1/4 mm	N/A	Connects Fractional Tube to Female NPT Thread
CMC 4-1N-STEL	1/4 in 6.35 mm	15.24 mm	17.78 mm	4.82 mm	32.76 mm	25.4 mm	Carbon Steel	1/16 mm	N/A	Connects Fractional Tube to Female NPT Thread
CMC 4-2N-STEL	1/4 in 6.35 mm	15.24 mm	17.78 mm	4.82 mm	32.76 mm	25.4 mm	Carbon Steel	1/8 mm	N/A	Connects Fractional Tube to Female NPT Thread
CMC 4-4N-STEL	1/4 in 6.35 mm	15.24 mm	17.78 mm	4.82 mm	37.84 mm	30.48 mm	Carbon Steel	1/4 mm	N/A	Connects Fractional Tube to Female NPT Thread
CMC 4-6N-STEL	1/4 in 6.35 mm	15.24 mm	17.78 mm	4.82 mm	38.35 mm	30.98 mm	Carbon Steel	3/8 mm	N/A	Connects Fractional Tube to Female NPT Thread
CMC 4-8N-STEL	1/4 in 6.35 mm	15.24 mm	17.78 mm	4.82 mm	44.70 mm	37.33 mm	Carbon Steel	1/2 mm	N/A	Connects Fractional Tube to Female NPT Thread
CMC 4-12N-STEL	1/4 in 6.35 mm	15.24 mm	17.78 mm	4.82 mm	46.22 mm	38.86 mm	Carbon Steel	3/4 mm	N/A	Connects Fractional Tube to Female NPT Thread
CMC 5-2N-STEL	5/16 in 7.93 mm	16.25 mm	18.54 mm	4.82 mm	34.03 mm	26.67 mm	Carbon Steel	1/8 mm	N/A	Connects Fractional Tube to Female NPT Thread
CMC 5-4N-STEL	5/16 in 7.93 mm	16.25 mm	18.54 mm	6.35 mm	38.60 mm	31.24 mm	Carbon Steel	1/4 mm	N/A	Connects Fractional Tube to Female NPT Thread
CMC 5-6N-STEL	5/16 in 7.93 mm	16.25 mm	18.54 mm	6.35 mm	39.11 mm	31.75 mm	Carbon Steel	3/8 mm	N/A	Connects Fractional Tube to Female NPT Thread
CMC 6-2N-STEL	3/8 in 9.52 mm	16.76 mm	19.30 mm	4.82 mm	35.30 mm	27.94 mm	Carbon Steel	1/8 mm	N/A	Connects Fractional Tube to Female NPT Thread
CMC 6-4N-STEL	3/8 in 9.52 mm	16.76 mm	19.30 mm	7.11 mm	39.87 mm	32.51 mm	Carbon Steel	1/4 mm	N/A	Connects Fractional Tube to Female NPT Thread
CMC 6-6N-STEL	3/8 in 9.52 mm	16.76 mm	19.30 mm	7.11 mm	39.87 mm	32.51 mm	Carbon Steel	3/8 mm	N/A	Connects Fractional Tube to Female NPT Thread
CMC 6-8N-STEL	3/8 in 9.52 mm	16.76 mm	19.30 mm	7.11 mm	46.22 mm	38.86 mm	Carbon Steel	1/2 mm	N/A	Connects Fractional Tube to Female NPT Thread
CMC 6-12N-STEL	3/8 in 9.52 mm	16.76 mm	19.30 mm	7.11 mm	47.75 mm	40.38 mm	Carbon Steel	3/4 mm	N/A	Connects Fractional Tube to Female NPT Thread

Référence	Tube O.D. (D)	A	B	Min. d	L	I	Material	T (NPT)	T [R (PT)]	Type
CMC 8-2N-STEL	1/2 in 12.7 mm	22.86 mm	21.84 mm	4.82 mm	38.86 mm	28.7 mm	Carbon Steel	1/8 mm	N/A	Connects Fractional Tube to Female NPT Thread
CMC 8-4N-STEL	1/2 in 12.7 mm	22.86 mm	21.84 mm	7.11 mm	43.43 mm	33.27 mm	Carbon Steel	1/4 mm	N/A	Connects Fractional Tube to Female NPT Thread
CMC 8-6N-STEL	1/2 in 12.7 mm	22.86 mm	21.84 mm	9.65 mm	43.43 mm	33.27 mm	Carbon Steel	3/8 mm	N/A	Connects Fractional Tube to Female NPT Thread
CMC 8-8N-STEL	1/2 in 12.7 mm	22.86 mm	21.84 mm	10.41 mm	49.02 mm	38.86 mm	Carbon Steel	1/2 mm	N/A	Connects Fractional Tube to Female NPT Thread
CMC 8-12N-STEL	1/2 in 12.7 mm	22.86 mm	21.84 mm	10.41 mm	50.54 mm	40.38 mm	Carbon Steel	3/4 mm	N/A	Connects Fractional Tube to Female NPT Thread
CMC 8-16N-STEL	1/2 in 12.7 mm	22.86 mm	21.84 mm	10.41 mm	57.15 mm	46.99 mm	Carbon Steel	1 mm	N/A	Connects Fractional Tube to Female NPT Thread
CMC 10-6N-STEL	5/8 in 15.87 mm	24.38 mm	21.84 mm	9.65 mm	44.19 mm	34.03 mm	Carbon Steel	3/8 mm	N/A	Connects Fractional Tube to Female NPT Thread
CMC 10-8N-STEL	5/8 in 15.87 mm	24.38 mm	21.84 mm	11.93 mm	49.02 mm	38.86 mm	Carbon Steel	1/2 mm	N/A	Connects Fractional Tube to Female NPT Thread
CMC 10-12N-STEL	5/8 in 15.87 mm	24.38 mm	21.84 mm	12.7 mm	50.54 mm	40.38 mm	Carbon Steel	3/4 mm	N/A	Connects Fractional Tube to Female NPT Thread
CMC 12-8N-STEL	3/4 in 19.05 mm	24.38 mm	21.84 mm	11.93 mm	50.54 mm	40.38 mm	Carbon Steel	1/2 mm	N/A	Connects Fractional Tube to Female NPT Thread
CMC 12-12N-STEL	3/4 in 19.05 mm	24.38 mm	21.84 mm	15.74 mm	50.54 mm	40.38 mm	Carbon Steel	3/4 mm	N/A	Connects Fractional Tube to Female NPT Thread
CMC 12-16N-STEL	3/4 in 19.05 mm	24.38 mm	21.84 mm	15.74 mm	57.15 mm	46.99 mm	Carbon Steel	1 mm	N/A	Connects Fractional Tube to Female NPT Thread
CMC 14-12N-STEL	7/8 in 22.22 mm	25.90 mm	21.84 mm	15.74 mm	50.54 mm	40.38 mm	Carbon Steel	3/4 mm	N/A	Connects Fractional Tube to Female NPT Thread
CMC 14-16N-STEL	7/8 in 22.22 mm	25.90 mm	21.84 mm	18.28 mm	57.15 mm	46.99 mm	Carbon Steel	1 mm	N/A	Connects Fractional Tube to Female NPT Thread
CMC 16-8N-STEL	1 in 25.4 mm	31.24 mm	26.41 mm	11.93 mm	57.4 mm	45.21 mm	Carbon Steel	1/2 mm	N/A	Connects Fractional Tube to Female NPT Thread
CMC 16-12N-STEL	1 in 25.4 mm	31.24 mm	26.41 mm	15.74 mm	57.4 mm	45.21 mm	Carbon Steel	3/4 mm	N/A	Connects Fractional Tube to Female NPT Thread
CMC 16-16N-STEL	1 in 25.4 mm	31.24 mm	26.41 mm	22.35 mm	62.23 mm	50.03 mm	Carbon Steel	1 mm	N/A	Connects Fractional Tube to Female NPT Thread

Référence	Tube O.D. (D)	A	B	Min. d	L	I	Material	T (NPT)	T [R (PT)]	Type
CMC 20-16N-STEL	1 1/4 in 31.75 mm	41.14 mm	38.86 mm	22.35 mm	77.21 mm	55.11 mm	Carbon Steel	1 mm	N/A	Connects Fractional Tube to Female NPT Thread
CMC 20-20N-STEL	1 1/4 in 31.75 mm	41.14 mm	38.86 mm	27.68 mm	77.21 mm	55.11 mm	Carbon Steel	1 1/4 mm	N/A	Connects Fractional Tube to Female NPT Thread
CMC 24-24N-STEL	1 1/2 in 38.10 mm	50.03 mm	45.21 mm	34.03 mm	88.90 mm	61.72 mm	Carbon Steel	1 1/2 mm	N/A	Connects Fractional Tube to Female NPT Thread
CMC 32-32N-STEL	2 in 50.80 mm	67.56 mm	62.73 mm	45.97 mm	113.53 mm	76.20 mm	Carbon Steel	2 mm	N/A	Connects Fractional Tube to Female NPT Thread
CMC 2M-2R-STEL	2 mm	12.9 mm	15.3 mm	1.7 mm	30.5 mm	23.9 mm	Carbon Steel	N/A	1/8 mm	Connects Metric Tube to Female ISO Tapered Thread
CMC 3M-2R-STEL	3 mm	12.9 mm	15.3 mm	2.4 mm	30.5 mm	23.9 mm	Carbon Steel	N/A	1/8 mm	Connects Metric Tube to Female ISO Tapered Thread
CMC 3M-4R-STEL	3 mm	12.9 mm	15.3 mm	2.4 mm	35.6 mm	29.0 mm	Carbon Steel	N/A	1/4 mm	Connects Metric Tube to Female ISO Tapered Thread
CMC 4M-2R-STEL	4 mm	13.7 mm	16.1 mm	2.4 mm	31.2 mm	24.6 mm	Carbon Steel	N/A	1/8 mm	Connects Metric Tube to Female ISO Tapered Thread
CMC 4M-4R-STEL	4 mm	13.7 mm	16.1 mm	2.4 mm	36.3 mm	29.7 mm	Carbon Steel	N/A	1/4 mm	Connects Metric Tube to Female ISO Tapered Thread
CMC 6M-2R-STEL	6.0 mm	15.3 mm	17.7 mm	4.8 mm	32.8 mm	25.4 mm	Carbon Steel	N/A	1/8 mm	Connects Metric Tube to Female ISO Tapered Thread
CMC 6M-4R-STEL	6.0 mm	15.3 mm	17.7 mm	4.8 mm	37.9 mm	30.5 mm	Carbon Steel	N/A	1/4 mm	Connects Metric Tube to Female ISO Tapered Thread
CMC 6M-6R-STEL	6.0 mm	15.3 mm	17.7 mm	4.8 mm	38.4 mm	31.0 mm	Carbon Steel	N/A	3/8 mm	Connects Metric Tube to Female ISO Tapered Thread
CMC 6M-8R-STEL	6.0 mm	15.3 mm	17.7 mm	4.8 mm	44.70 mm	37.3 mm	Carbon Steel	N/A	1/2 mm	Connects Metric Tube to Female ISO Tapered Thread
CMC 8M-2R-STEL	8.0 mm	16.2 mm	18.6 mm	4.8 mm	34.2 mm	26.7 mm	Carbon Steel	N/A	1/8 mm	Connects Metric Tube to Female ISO Tapered Thread
CMC 8M-4R-STEL	8.0 mm	16.2 mm	18.6 mm	6.4 mm	38.7 mm	31.2 mm	Carbon Steel	N/A	1/4 mm	Connects Metric Tube to Female ISO Tapered Thread
CMC 8M-6R-STEL	8.0 mm	16.2 mm	18.6 mm	6.4 mm	39.2 mm	31.8 mm	Carbon Steel	N/A	3/8 mm	Connects Metric Tube to Female ISO Tapered Thread
CMC 8M-8R-STEL	8.0 mm	16.2 mm	18.6 mm	6.4 mm	45.6 mm	38.10 mm	Carbon Steel	N/A	1/2 mm	Connects Metric Tube to Female ISO Tapered Thread
CMC 10M-2R-STEL	10.0 mm	17.2 mm	19.5 mm	4.8 mm	36.3 mm	28.7 mm	Carbon Steel	N/A	1/8 mm	Connects Metric Tube to Female ISO Tapered Thread
CMC 10M-4R-STEL	10.0 mm	17.2 mm	19.5 mm	7.1 mm	40.9 mm	33.3 mm	Carbon Steel	N/A	1/4 mm	Connects Metric Tube to Female ISO Tapered Thread
CMC 10M-6R-STEL	10.0 mm	17.2 mm	19.5 mm	7.9 mm	40.9 mm	33.3 mm	Carbon Steel	N/A	3/8 mm	Connects Metric Tube to Female ISO Tapered Thread
CMC 10M-8R-STEL	10.0 mm	17.2 mm	19.5 mm	7.9 mm	46.5 mm	38.9 mm	Carbon Steel	N/A	1/2 mm	Connects Metric Tube to Female ISO Tapered Thread
CMC 12M-4R-STEL	12.0 mm	22.8 mm	22.0 mm	7.1 mm	43.4 mm	33.3 mm	Carbon Steel	N/A	1/4 mm	Connects Metric Tube to Female ISO Tapered Thread
CMC 12M-6R-STEL	12.0 mm	22.8 mm	22.0 mm	9.5 mm	43.4 mm	33.3 mm	Carbon Steel	N/A	3/8 mm	Connects Metric Tube to Female ISO Tapered Thread
CMC 12M-8R-STEL	12.0 mm	22.8 mm	22.0 mm	9.5 mm	49.0 mm	38.9 mm	Carbon Steel	N/A	1/2 mm	Connects Metric Tube to Female ISO Tapered Thread
CMC 12M-12R-STEL	12.0 mm	22.8 mm	22.0 mm	9.5 mm	50.50 mm	40.4 mm	Carbon Steel	N/A	3/4 mm	Connects Metric Tube to Female ISO Tapered Thread
CMC 15M-8R-STEL	15 mm	24.4 mm	22.0 mm	11.9 mm	49.0 mm	38.9 mm	Carbon Steel	N/A	1/2 mm	Connects Metric Tube to Female ISO Tapered Thread

Référence	Tube O.D. (D)	A	B	Min. d	L	I	Material	T (NPT)	T [R (PT)]	Type
CMC 16M-4R-STEL	16.0 mm	24.4 mm	22.0 mm	7.1 mm	44.1 mm	34.0 mm	Carbon Steel	N/A	1/4 mm	Connects Metric Tube to Female ISO Tapered Thread
CMC 16M-6R-STEL	16.0 mm	24.4 mm	22.0 mm	9.5 mm	44.1 mm	34.0 mm	Carbon Steel	N/A	3/8 mm	Connects Metric Tube to Female ISO Tapered Thread
CMC 16M-8R-STEL	16.0 mm	24.4 mm	22.0 mm	11.9 mm	49.0 mm	38.9 mm	Carbon Steel	N/A	1/2 mm	Connects Metric Tube to Female ISO Tapered Thread
CMC 16M-12R-STEL	16.0 mm	24.4 mm	22.0 mm	12.7 mm	49.0 mm	38.9 mm	Carbon Steel	N/A	3/4 mm	Connects Metric Tube to Female ISO Tapered Thread
CMC 18M-8R-STEL	18 mm	24.4 mm	22.0 mm	11.9 mm	50.50 mm	40.4 mm	Carbon Steel	N/A	1/2 mm	Connects Metric Tube to Female ISO Tapered Thread
CMC 18M-12R-STEL	18 mm	24.4 mm	22.0 mm	15.1 mm	50.50 mm	40.4 mm	Carbon Steel	N/A	3/4 mm	Connects Metric Tube to Female ISO Tapered Thread
CMC 20M-8R-STEL	20 mm	26.0 mm	22.0 mm	11.9 mm	52.30 mm	42.2 mm	Carbon Steel	N/A	1/2 mm	Connects Metric Tube to Female ISO Tapered Thread
CMC 20M-12R-STEL	20 mm	26.0 mm	22.0 mm	15.9 mm	52.30 mm	42.2 mm	Carbon Steel	N/A	3/4 mm	Connects Metric Tube to Female ISO Tapered Thread
CMC 22M-12R-STEL	22 mm	26.0 mm	22.0 mm	15.9 mm	52.30 mm	42.2 mm	Carbon Steel	N/A	3/4 mm	Connects Metric Tube to Female ISO Tapered Thread
CMC 22M-16R-STEL	22 mm	26.0 mm	22.0 mm	18.3 mm	57.0 mm	47.0 mm	Carbon Steel	N/A	1 mm	Connects Metric Tube to Female ISO Tapered Thread
CMC 25M-12R-STEL	25 mm	31.3 mm	26.5 mm	15.9 mm	57.5 mm	45.2 mm	Carbon Steel	N/A	3/4 mm	Connects Metric Tube to Female ISO Tapered Thread
CMC 25M-16R-STEL	25 mm	31.3 mm	26.5 mm	21.8 mm	62.3 mm	50.0 mm	Carbon Steel	N/A	1 mm	Connects Metric Tube to Female ISO Tapered Thread
CMC 28M-16R-STEL	28 mm	36.6 mm	36.6 mm	21.8 mm	72.4 mm	51.6 mm	Carbon Steel	N/A	1 mm	Connects Metric Tube to Female ISO Tapered Thread
CMC 28M-20R-STEL	28 mm	36.6 mm	36.6 mm	21.8 mm	73.1 mm	52.3 mm	Carbon Steel	N/A	1 1/4 mm	Connects Metric Tube to Female ISO Tapered Thread
CMC 32M-20R-STEL	32 mm	42.0 mm	41.6 mm	28.6 mm	79.6 mm	56.6 mm	Carbon Steel	N/A	1 1/4 mm	Connects Metric Tube to Female ISO Tapered Thread
CMC 32M-24R-STEL	38 mm	49.4 mm	47.9 mm	33.7 mm	91.6 mm	64.0 mm	Carbon Steel	N/A	1 1/2 mm	Connects Metric Tube to Female ISO Tapered Thread
CMC 1-1N-BRAS	1/16 in 1.58 mm	8.63 mm	10.92 mm	1.27 mm	23.83 mm	20.00 mm	Brass	1/16 mm	N/A	Connects Fractional Tube to Female NPT Thread
CMC 1-2N-BRAS	1/16 in 1.58 mm	8.63 mm	10.92 mm	1.27 mm	26.23 mm	22.35 mm	Brass	1/8 mm	N/A	Connects Fractional Tube to Female NPT Thread
CMC 1-4N-BRAS	1/16 in 1.58 mm	8.63 mm	10.92 mm	1.27 mm	30.98 mm	27.17 mm	Brass	1/4 mm	N/A	Connects Fractional Tube to Female NPT Thread
CMC 2-1N-BRAS	1/8 in 3.17 mm	12.70 mm	15.24 mm	2.28 mm	29.71 mm	23.11 mm	Brass	1/16 mm	N/A	Connects Fractional Tube to Female NPT Thread
CMC 2-2N-BRAS	1/8 in 3.17 mm	12.70 mm	15.24 mm	2.28 mm	30.48 mm	23.87 mm	Brass	1/8 mm	N/A	Connects Fractional Tube to Female NPT Thread
CMC 2-4N-BRAS	1/8 in 3.17 mm	12.70 mm	15.24 mm	2.28 mm	35.56 mm	28.95 mm	Brass	1/4 mm	N/A	Connects Fractional Tube to Female NPT Thread
CMC 2-6N-BRAS	1/8 in 3.17 mm	12.70 mm	15.24 mm	2.28 mm	35.81 mm	29.21 mm	Brass	3/8 mm	N/A	Connects Fractional Tube to Female NPT Thread

Référence	Tube O.D. (D)	A	B	Min. d	L	I	Material	T (NPT)	T [R (PT)]	Type
CMC 2-8N-BRAS	1/8 in 3.17 mm	12.70 mm	15.24 mm	2.28 mm	42.16 mm	35.56 mm	Brass	1/2 mm	N/A	Connects Fractional Tube to Female NPT Thread
CMC 3 -2N-BRAS	3/16 in 4.76 mm	13.71 mm	16.00 mm	3.04 mm	31.24 mm	24.63 mm	Brass	1/8 mm	N/A	Connects Fractional Tube to Female NPT Thread
CMC 3-4N-BRAS	3/16 in 4.76 mm	13.71 mm	16.00 mm	3.04 mm	36.32 mm	29.71 mm	Brass	1/4 mm	N/A	Connects Fractional Tube to Female NPT Thread
CMC 4-1N-BRAS	1/4 in 6.35 mm	15.24 mm	17.78 mm	4.82 mm	32.76 mm	25.4 mm	Brass	1/16 mm	N/A	Connects Fractional Tube to Female NPT Thread
CMC 4-2N-BRAS	1/4 in 6.35 mm	15.24 mm	17.78 mm	4.82 mm	32.76 mm	25.4 mm	Brass	1/8 mm	N/A	Connects Fractional Tube to Female NPT Thread
CMC 4-4N-BRAS	1/4 in 6.35 mm	15.24 mm	17.78 mm	4.82 mm	37.84 mm	30.48 mm	Brass	1/4 mm	N/A	Connects Fractional Tube to Female NPT Thread
CMC 4-6N-BRAS	1/4 in 6.35 mm	15.24 mm	17.78 mm	4.82 mm	38.35 mm	30.98 mm	Brass	3/8 mm	N/A	Connects Fractional Tube to Female NPT Thread
CMC 4-8N-BRAS	1/4 in 6.35 mm	15.24 mm	17.78 mm	4.82 mm	44.70 mm	37.33 mm	Brass	1/2 mm	N/A	Connects Fractional Tube to Female NPT Thread
CMC 4-12N-BRAS	1/4 in 6.35 mm	15.24 mm	17.78 mm	4.82 mm	46.22 mm	38.86 mm	Brass	3/4 mm	N/A	Connects Fractional Tube to Female NPT Thread
CMC 5-2N-BRAS	5/16 in 7.93 mm	16.25 mm	18.54 mm	4.82 mm	34.03 mm	26.67 mm	Brass	1/8 mm	N/A	Connects Fractional Tube to Female NPT Thread
CMC 5-4N-BRAS	5/16 in 7.93 mm	16.25 mm	18.54 mm	6.35 mm	38.60 mm	31.24 mm	Brass	1/4 mm	N/A	Connects Fractional Tube to Female NPT Thread
CMC 5-6N-BRAS	5/16 in 7.93 mm	16.25 mm	18.54 mm	6.35 mm	39.11 mm	31.75 mm	Brass	3/8 mm	N/A	Connects Fractional Tube to Female NPT Thread
CMC 6-2N-BRAS	3/8 in 9.52 mm	16.76 mm	19.30 mm	4.82 mm	35.30 mm	27.94 mm	Brass	1/8 mm	N/A	Connects Fractional Tube to Female NPT Thread
CMC 6-4N-BRAS	3/8 in 9.52 mm	16.76 mm	19.30 mm	7.11 mm	39.87 mm	32.51 mm	Brass	1/4 mm	N/A	Connects Fractional Tube to Female NPT Thread
CMC 6-6N-BRAS	3/8 in 9.52 mm	16.76 mm	19.30 mm	7.11 mm	39.87 mm	32.51 mm	Brass	3/8 mm	N/A	Connects Fractional Tube to Female NPT Thread
CMC 6-8N-BRAS	3/8 in 9.52 mm	16.76 mm	19.30 mm	7.11 mm	46.22 mm	38.86 mm	Brass	1/2 mm	N/A	Connects Fractional Tube to Female NPT Thread
CMC 6-12N-BRAS	3/8 in 9.52 mm	16.76 mm	19.30 mm	7.11 mm	47.75 mm	40.38 mm	Brass	3/4 mm	N/A	Connects Fractional Tube to Female NPT Thread

Référence	Tube O.D. (D)	A	B	Min. d	L	I	Material	T (NPT)	T [R (PT)]	Type
CMC 8-2N-BRAS	1/2 in 12.7 mm	22.86 mm	21.84 mm	4.82 mm	38.86 mm	28.7 mm	Brass	1/8 mm	N/A	Connects Fractional Tube to Female NPT Thread
CMC 8-4N-BRAS	1/2 in 12.7 mm	22.86 mm	21.84 mm	7.11 mm	43.43 mm	33.27 mm	Brass	1/4 mm	N/A	Connects Fractional Tube to Female NPT Thread
CMC 8-6N-BRAS	1/2 in 12.7 mm	22.86 mm	21.84 mm	9.65 mm	43.43 mm	33.27 mm	Brass	3/8 mm	N/A	Connects Fractional Tube to Female NPT Thread
CMC 8-8N-BRAS	1/2 in 12.7 mm	22.86 mm	21.84 mm	10.41 mm	49.02 mm	38.86 mm	Brass	1/2 mm	N/A	Connects Fractional Tube to Female NPT Thread
CMC 8-12N-BRAS	1/2 in 12.7 mm	22.86 mm	21.84 mm	10.41 mm	50.54 mm	40.38 mm	Brass	3/4 mm	N/A	Connects Fractional Tube to Female NPT Thread
CMC 8-16N-BRAS	1/2 in 12.7 mm	22.86 mm	21.84 mm	10.41 mm	57.15 mm	46.99 mm	Brass	1 mm	N/A	Connects Fractional Tube to Female NPT Thread
CMC 10-6N-BRAS	5/8 in 15.87 mm	24.38 mm	21.84 mm	9.65 mm	44.19 mm	34.03 mm	Brass	3/8 mm	N/A	Connects Fractional Tube to Female NPT Thread
CMC 10-8N-BRAS	5/8 in 15.87 mm	24.38 mm	21.84 mm	11.93 mm	49.02 mm	38.86 mm	Brass	1/2 mm	N/A	Connects Fractional Tube to Female NPT Thread
CMC 10-12N-BRAS	5/8 in 15.87 mm	24.38 mm	21.84 mm	12.7 mm	50.54 mm	40.38 mm	Brass	3/4 mm	N/A	Connects Fractional Tube to Female NPT Thread
CMC 12-8N-BRAS	3/4 in 19.05 mm	24.38 mm	21.84 mm	11.93 mm	50.54 mm	40.38 mm	Brass	1/2 mm	N/A	Connects Fractional Tube to Female NPT Thread
CMC 12-12N-BRAS	3/4 in 19.05 mm	24.38 mm	21.84 mm	15.74 mm	50.54 mm	40.38 mm	Brass	3/4 mm	N/A	Connects Fractional Tube to Female NPT Thread
CMC 12-16N-BRAS	3/4 in 19.05 mm	24.38 mm	21.84 mm	15.74 mm	57.15 mm	46.99 mm	Brass	1 mm	N/A	Connects Fractional Tube to Female NPT Thread
CMC 14-12N-BRAS	7/8 in 22.22 mm	25.90 mm	21.84 mm	15.74 mm	50.54 mm	40.38 mm	Brass	3/4 mm	N/A	Connects Fractional Tube to Female NPT Thread
CMC 14-16N-BRAS	7/8 in 22.22 mm	25.90 mm	21.84 mm	18.28 mm	57.15 mm	46.99 mm	Brass	1 mm	N/A	Connects Fractional Tube to Female NPT Thread
CMC 16-8N-BRAS	1 in 25.4 mm	31.24 mm	26.41 mm	11.93 mm	57.4 mm	45.21 mm	Brass	1/2 mm	N/A	Connects Fractional Tube to Female NPT Thread
CMC 16-12N-BRAS	1 in 25.4 mm	31.24 mm	26.41 mm	15.74 mm	57.4 mm	45.21 mm	Brass	3/4 mm	N/A	Connects Fractional Tube to Female NPT Thread
CMC 16-16N-BRAS	1 in 25.4 mm	31.24 mm	26.41 mm	22.35 mm	62.23 mm	50.03 mm	Brass	1 mm	N/A	Connects Fractional Tube to Female NPT Thread

Référence	Tube O.D. (D)	A	B	Min. d	L	I	Material	T (NPT)	T [R (PT)]	Type
CMC 20-16N-BRAS	1 1/4 in 31.75 mm	41.14 mm	38.86 mm	22.35 mm	77.21 mm	55.11 mm	Brass	1 mm	N/A	Connects Fractional Tube to Female NPT Thread
CMC 20-20N-BRAS	1 1/4 in 31.75 mm	41.14 mm	38.86 mm	27.68 mm	77.21 mm	55.11 mm	Brass	1 1/4 mm	N/A	Connects Fractional Tube to Female NPT Thread
CMC 24-24N-BRAS	1 1/2 in 38.10 mm	50.03 mm	45.21 mm	34.03 mm	88.90 mm	61.72 mm	Brass	1 1/2 mm	N/A	Connects Fractional Tube to Female NPT Thread
CMC 32-32N-BRAS	2 in 50.80 mm	67.56 mm	62.73 mm	45.97 mm	113.53 mm	76.20 mm	Brass	2 mm	N/A	Connects Fractional Tube to Female NPT Thread
CMC 2M-2R-BRAS	2 mm	12.9 mm	15.3 mm	1.7 mm	30.5 mm	23.9 mm	Brass	N/A	1/8 mm	Connects Metric Tube to Female ISO Tapered Thread
CMC 3M-2R-BRAS	3 mm	12.9 mm	15.3 mm	2.4 mm	30.5 mm	23.9 mm	Brass	N/A	1/8 mm	Connects Metric Tube to Female ISO Tapered Thread
CMC 3M-4R-BRAS	3 mm	12.9 mm	15.3 mm	2.4 mm	35.6 mm	29.0 mm	Brass	N/A	1/4 mm	Connects Metric Tube to Female ISO Tapered Thread
CMC 4M-2R-BRAS	4 mm	13.7 mm	16.1 mm	2.4 mm	31.2 mm	24.6 mm	Brass	N/A	1/8 mm	Connects Metric Tube to Female ISO Tapered Thread
CMC 4M-4R-BRAS	4 mm	13.7 mm	16.1 mm	2.4 mm	36.3 mm	29.7 mm	Brass	N/A	1/4 mm	Connects Metric Tube to Female ISO Tapered Thread
CMC 6M-2R-BRAS	6.0 mm	15.3 mm	17.7 mm	4.8 mm	32.8 mm	25.4 mm	Brass	N/A	1/8 mm	Connects Metric Tube to Female ISO Tapered Thread
CMC 6M-4R-BRAS	6.0 mm	15.3 mm	17.7 mm	4.8 mm	37.9 mm	30.5 mm	Brass	N/A	1/4 mm	Connects Metric Tube to Female ISO Tapered Thread
CMC 6M-6R-BRAS	6.0 mm	15.3 mm	17.7 mm	4.8 mm	38.4 mm	31.0 mm	Brass	N/A	3/8 mm	Connects Metric Tube to Female ISO Tapered Thread
CMC 6M-8R-BRAS	6.0 mm	15.3 mm	17.7 mm	4.8 mm	44.70 mm	37.3 mm	Brass	N/A	1/2 mm	Connects Metric Tube to Female ISO Tapered Thread
CMC 8M-2R-BRAS	8.0 mm	16.2 mm	18.6 mm	4.8 mm	34.2 mm	26.7 mm	Brass	N/A	1/8 mm	Connects Metric Tube to Female ISO Tapered Thread
CMC 8M-4R-BRAS	8.0 mm	16.2 mm	18.6 mm	6.4 mm	38.7 mm	31.2 mm	Brass	N/A	1/4 mm	Connects Metric Tube to Female ISO Tapered Thread
CMC 8M-6R-BRAS	8.0 mm	16.2 mm	18.6 mm	6.4 mm	39.2 mm	31.8 mm	Brass	N/A	3/8 mm	Connects Metric Tube to Female ISO Tapered Thread
CMC 8M-8R-BRAS	8.0 mm	16.2 mm	18.6 mm	6.4 mm	45.6 mm	38.10 mm	Brass	N/A	1/2 mm	Connects Metric Tube to Female ISO Tapered Thread
CMC 10M-2R-BRAS	10.0 mm	17.2 mm	19.5 mm	4.8 mm	36.3 mm	28.7 mm	Brass	N/A	1/8 mm	Connects Metric Tube to Female ISO Tapered Thread
CMC 10M-4R-BRAS	10.0 mm	17.2 mm	19.5 mm	7.1 mm	40.9 mm	33.3 mm	Brass	N/A	1/4 mm	Connects Metric Tube to Female ISO Tapered Thread
CMC 10M-6R-BRAS	10.0 mm	17.2 mm	19.5 mm	7.9 mm	40.9 mm	33.3 mm	Brass	N/A	3/8 mm	Connects Metric Tube to Female ISO Tapered Thread
CMC 10M-8R-BRAS	10.0 mm	17.2 mm	19.5 mm	7.9 mm	46.5 mm	38.9 mm	Brass	N/A	1/2 mm	Connects Metric Tube to Female ISO Tapered Thread
CMC 12M-4R-BRAS	12.0 mm	22.8 mm	22.0 mm	7.1 mm	43.4 mm	33.3 mm	Brass	N/A	1/4 mm	Connects Metric Tube to Female ISO Tapered Thread
CMC 12M-6R-BRAS	12.0 mm	22.8 mm	22.0 mm	9.5 mm	43.4 mm	33.3 mm	Brass	N/A	3/8 mm	Connects Metric Tube to Female ISO Tapered Thread
CMC 12M-8R-BRAS	12.0 mm	22.8 mm	22.0 mm	9.5 mm	49.0 mm	38.9 mm	Brass	N/A	1/2 mm	Connects Metric Tube to Female ISO Tapered Thread
CMC 12M-12R-BRAS	12.0 mm	22.8 mm	22.0 mm	9.5 mm	50.50 mm	40.4 mm	Brass	N/A	3/4 mm	Connects Metric Tube to Female ISO Tapered Thread
CMC 15M-8R-BRAS	15 mm	24.4 mm	22.0 mm	11.9 mm	49.0 mm	38.9 mm	Brass	N/A	1/2 mm	Connects Metric Tube to Female ISO Tapered Thread

Référence	Tube O.D. (D)	A	B	Min. d	L	I	Material	T (NPT)	T [R (PT)]	Type
CMC 16M-4R-BRAS	16.0 mm	24.4 mm	22.0 mm	7.1 mm	44.1 mm	34.0 mm	Brass	N/A	1/4 mm	Connects Metric Tube to Female ISO Tapered Thread
CMC 16M-6R-BRAS	16.0 mm	24.4 mm	22.0 mm	9.5 mm	44.1 mm	34.0 mm	Brass	N/A	3/8 mm	Connects Metric Tube to Female ISO Tapered Thread
CMC 16M-8R-BRAS	16.0 mm	24.4 mm	22.0 mm	11.9 mm	49.0 mm	38.9 mm	Brass	N/A	1/2 mm	Connects Metric Tube to Female ISO Tapered Thread
CMC 16M-12R-BRAS	16.0 mm	24.4 mm	22.0 mm	12.7 mm	49.0 mm	38.9 mm	Brass	N/A	3/4 mm	Connects Metric Tube to Female ISO Tapered Thread
CMC 18M-8R-BRAS	18 mm	24.4 mm	22.0 mm	11.9 mm	50.50 mm	40.4 mm	Brass	N/A	1/2 mm	Connects Metric Tube to Female ISO Tapered Thread
CMC 18M-12R-BRAS	18 mm	24.4 mm	22.0 mm	15.1 mm	50.50 mm	40.4 mm	Brass	N/A	3/4 mm	Connects Metric Tube to Female ISO Tapered Thread
CMC 20M-8R-BRAS	20 mm	26.0 mm	22.0 mm	11.9 mm	52.30 mm	42.2 mm	Brass	N/A	1/2 mm	Connects Metric Tube to Female ISO Tapered Thread
CMC 20M-12R-BRAS	20 mm	26.0 mm	22.0 mm	15.9 mm	52.30 mm	42.2 mm	Brass	N/A	3/4 mm	Connects Metric Tube to Female ISO Tapered Thread
CMC 22M-12R-BRAS	22 mm	26.0 mm	22.0 mm	15.9 mm	52.30 mm	42.2 mm	Brass	N/A	3/4 mm	Connects Metric Tube to Female ISO Tapered Thread
CMC 22M-16R-BRAS	22 mm	26.0 mm	22.0 mm	18.3 mm	57.0 mm	47.0 mm	Brass	N/A	1 mm	Connects Metric Tube to Female ISO Tapered Thread
CMC 25M-12R-BRAS	25 mm	31.3 mm	26.5 mm	15.9 mm	57.5 mm	45.2 mm	Brass	N/A	3/4 mm	Connects Metric Tube to Female ISO Tapered Thread
CMC 25M-16R-BRAS	25 mm	31.3 mm	26.5 mm	21.8 mm	62.3 mm	50.0 mm	Brass	N/A	1 mm	Connects Metric Tube to Female ISO Tapered Thread
CMC 28M-16R-BRAS	28 mm	36.6 mm	36.6 mm	21.8 mm	72.4 mm	51.6 mm	Brass	N/A	1 mm	Connects Metric Tube to Female ISO Tapered Thread
CMC 28M-20R-BRAS	28 mm	36.6 mm	36.6 mm	21.8 mm	73.1 mm	52.3 mm	Brass	N/A	1 1/4 mm	Connects Metric Tube to Female ISO Tapered Thread
CMC 32M-20R-BRAS	32 mm	42.0 mm	41.6 mm	28.6 mm	79.6 mm	56.6 mm	Brass	N/A	1 1/4 mm	Connects Metric Tube to Female ISO Tapered Thread
CMC 32M-24R-BRAS	38 mm	49.4 mm	47.9 mm	33.7 mm	91.6 mm	64.0 mm	Brass	N/A	1 1/2 mm	Connects Metric Tube to Female ISO Tapered Thread